

Outsulation® RMD System™

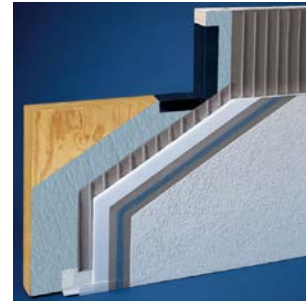
DS440

An Exterior Wall Insulation and Finish System With Moisture Drainage That Incorporates Continuous Insulation and An Air/Water-Resistive Barrier

For An Extra Level of Moisture Protection

The Outsulation RMD System from Dryvit has been engineered specifically for residential construction. It incorporates a drainage plane that is installed between the code-approved water-resistive barrier and the continuous insulation. It is this drainage plane that allows for incidental water to weep to the exterior. The system is mechanically fastened to a plywood or OSB substrate with Dryvit approved fasteners or adhesively applied over lath.

The Outsulation RMD System is designed to be used in all areas of the country and in all types of climates. The system provides continuous insulation to meet local Energy Codes and architectural appeal to meet homeowners' demands.



Warranty

Dryvit Systems, Inc. shall provide a written limited materials warranty upon written request. Dryvit shall make no other warranties, expressed or implied. Dryvit does not warrant workmanship. Full details are available from Dryvit Systems, Inc. This warranty also has another important benefit: it is transferable from the builder to the owner, and subsequent owners, during the covered period.

Peace of Mind Plus All The Dryvit Features You've Enjoyed For Over 45 Years

With the Outsulation RMD System, you get two levels of weather protection plus all of these attractive features:

Energy Efficiency - The system incorporates continuous insulation which is installed on the outside of the framing, effectively sealing thermal bridges, reducing energy loss and providing a more consistent interior temperature.

Design Flexibility - Choose from a multitude of colors and textures to give the project your distinctive touch. The Outsulation RMD System allows for affordable and impressive entranceways, window borders, arches, columns, sculptured looks and more.

Durability - Dryvit systems have been tested and proven in exhaustive studies for impact, fade and stain resistance. Dryvit's DPR (Dirt Pickup Resistance) finishes and PMR™ (Proven Mildew Resistant) finishes offer owners state-of-the-art performance. Dryvit finishes, as with all other exteriors, require minimal maintenance (refer to Dryvit's Homeowner's Maintenance Guide, [DS235](#) or Cleaning and Recoating Data Sheet [DS152](#)).

For details, specifications and other information, call 1-800-556-7752 ext. 9.

Dryvit Systems, Inc.
One Energy Way
West Warwick, RI 02893
800-556-7752
www.dryvit.com

Information contained in this information page conforms to the standard detail recommendations and specifications for the installation of Dryvit Systems, Inc. products as of the date of publication of this document and is presented in good faith. Dryvit Systems, Inc. assumes no liability, expressed or implied, as to the architecture, engineering or workmanship of any project. To ensure that you are using the latest, most complete information, contact Dryvit Systems, Inc.

For more information on [Dryvit Systems](#) or [Continuous Insulation](#), visit these links.

