

COMMERCIAL CEMENT PLASTER 3TM



Fiberglass Reinforced Portland Cement Plaster
With Integral Fluid Applied Air/Water-Resistive Barrier

Commercial Cement Plaster 3 Installation Details

TABLE OF CONTENTS

DETAIL

PAGE

NOTE

Cutaway	CCP-3 0.0.01
Opening Preparation Backstop® NT/ AquaFlash® System	CCP-3 0.0.02
Termination at Wood Window	CCP-3 0.0.03
Termination at Self Flashing Nail-On Window	CCP-3 0.0.04
Termination at Storefront Window- Jamb	CCP-3 0.0.05
Termination at Storefront Window Head-Sill	CCP-3 0.0.06
Termination at Storefront Window Setback	CCP-3 0.0.07
Termination at Concrete Foundation	CCP-3 0.0.08
Outside Corner	CCP-3 0.0.09
Inside Corner Detail	CCP-3 0.0.10
Horizontal Flashing & Expansion Joint	CCP-3 0.0.11
Sloped Sill	CCP-3 0.0.12
Termination at Roof	CCP-3 0.0.13
Termination at Roof/Wall Intersection	CCP-3 0.0.14
Termination at Parapet Flashing	CCP-3 0.0.15
EPS Cornice	CCP-3 0.0.16
Control Joint Intersection	CCP-3 0.0.17
Horizontal or Vertical One-Piece Expansion Joint	CCP-3 0.0.18

DRYVIT MAKES NO REPRESENTATION REGARDING CONFORMITY OF ITS SUGGESTIONS TO MODEL BUILDING CODES, ENGINEERING CRITERIA, SPECIFIC APPLICATIONS OR PROJECT LOCATIONS. ALL COMPONENTS INDICATED IN ILLUSTRATIONS, AS WELL AS OTHERS THAT MAY BE REQUIRED FOR THE INTEGRITY OF THE SYSTEM SHALL BE DESIGNED, DETAILED AND ENGINEERED BY REPRESENTATIVES OF THE ARCHITECT, OWNER OR CONTRACTOR TO BE IN CONFORMANCE WITH MODEL CODES, ARCHITECTURAL AND ENGINEERING REQUIREMENTS PERTAINING TO SPECIFIC BUILDING PROJECTS.

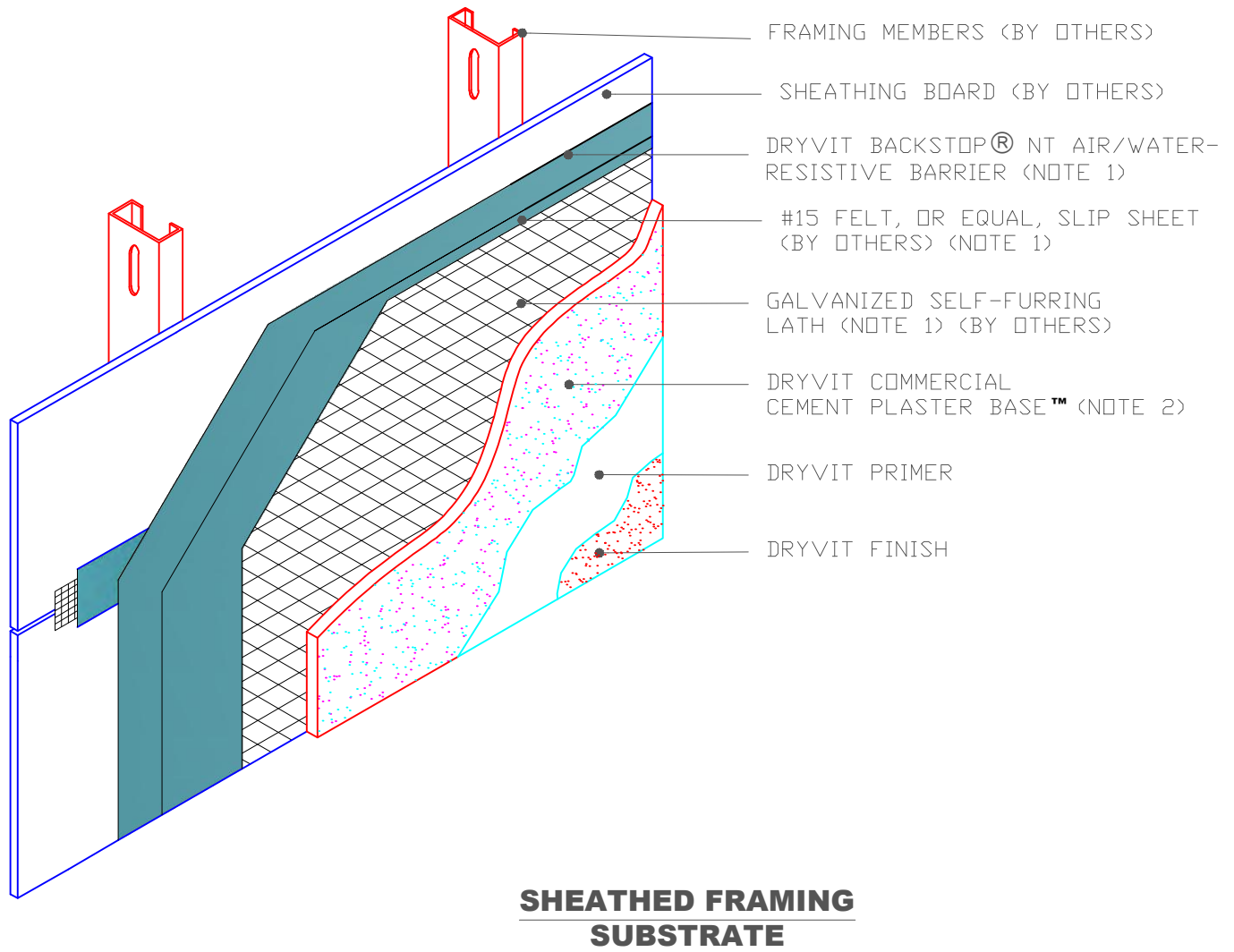
DRYVIT MAKES NO WARRANTY, EXPRESSED OR IMPLIED, AS TO THE ARCHITECTURAL DESIGN, ENGINEERING, OR WORKMANSHIP OF PROJECTS UTILIZING DRYVIT SYSTEMS OR PRODUCTS.

THE LIABILITIES OF DRYVIT SHALL BE AS STATED IN THE DRYVIT STANDARD WARRANTY. CONTACT DRYVIT FOR A FULL AND COMPLETE COPY OF THIS WARRANTY.

Commercial Cement Plaster 3™

The architecture, engineering, and design of the project using the Dryvit products is the responsibility of the project's design professional. All systems must comply with local building codes and standards. This detail is for general information and guidance only and Dryvit specifically disclaims any liability for the use of this detail and for the architecture, design, engineering or workmanship of any project. The project design professional determines, in its sole discretion, whether this detail or a functionally equivalent detail is best suited for the project. Use of a functionally equivalent detail does not violate Dryvit's warranty. This detail is subject to change without notice. Contact Dryvit to ensure you have the most recent version.





Commercial Cement Plaster 3™

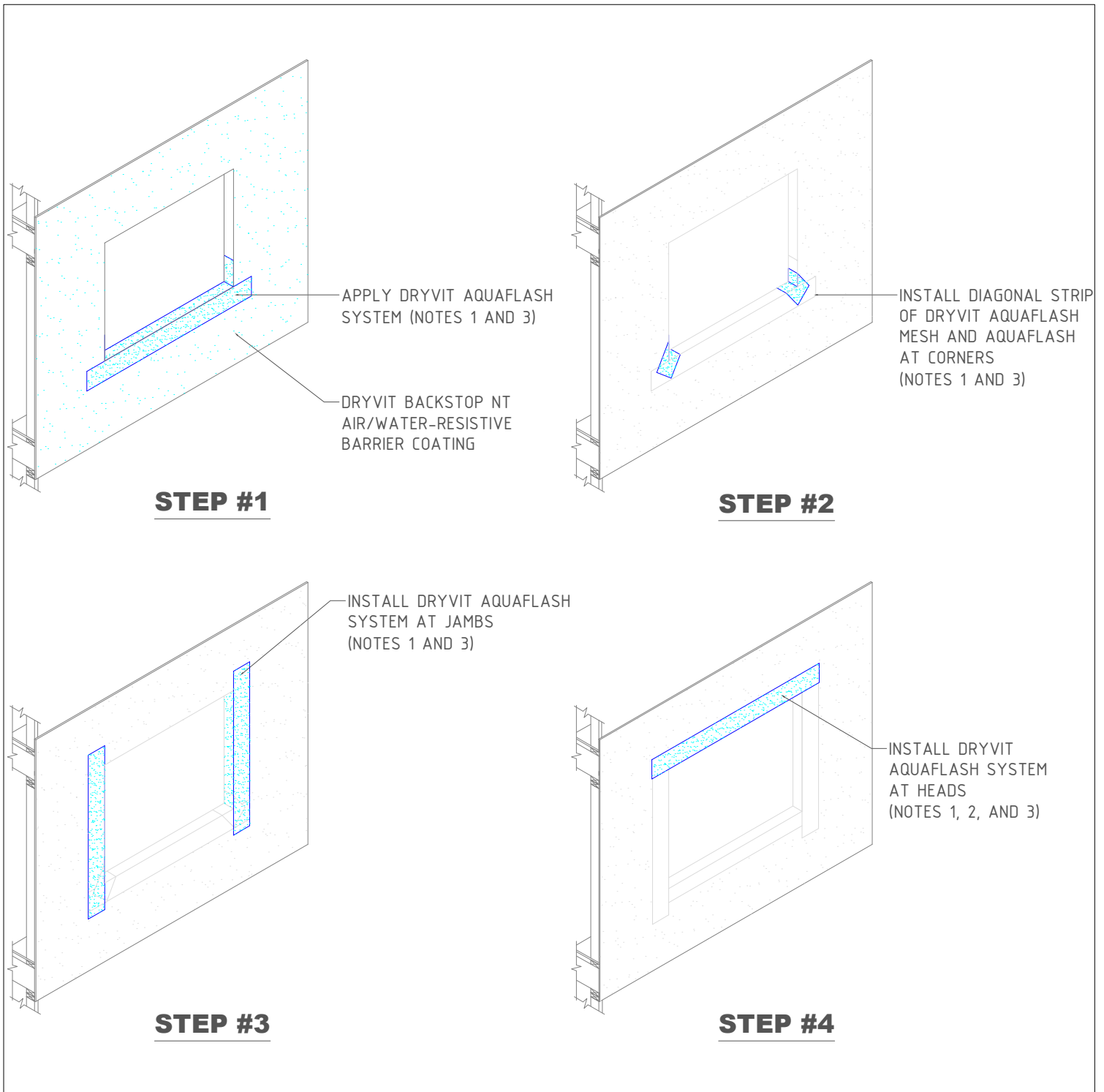
Cutaway

NOTE:

1. BACKSTOP NT AIR/WATER-RESISTIVE BARRIER REQUIRES USE OF A SLIP SHEET LAYER SUCH AS #15 FELT OR PAPER BACKED LATH.
2. OTHER APPROVED SCRATCH AND BROWN COATS MAY BE ACCEPTABLE. CONSULT DRYVIT SYSTEMS, INC. FOR SPECIFICS.

The architecture, engineering, and design of the project using the Dryvit products is the responsibility of the project's design professional. All systems must comply with local building codes and standards. This detail is for general information and guidance only and Dryvit specifically disclaims any liability for the use of this detail and for the architecture, design, engineering or workmanship of any project. The project design professional determines, in its sole discretion, whether this detail or a functionally equivalent detail is best suited for the project. Use of a functionally equivalent detail does not violate Dryvit's warranty. This detail is subject to change without notice. Contact Dryvit to ensure you have the most recent version.





Commercial Cement Plaster 3™

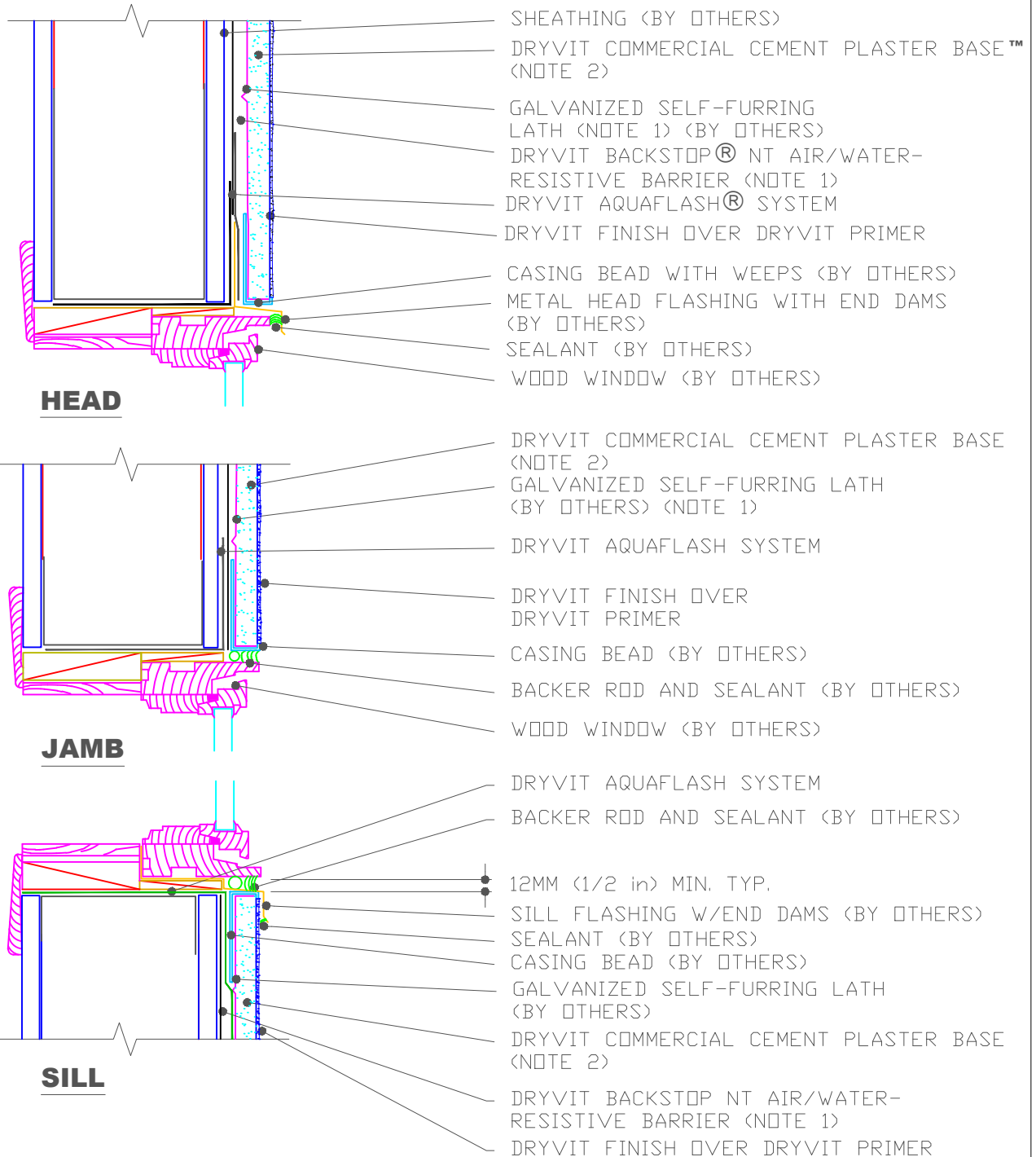
Opening Preparation-Backstop® NT/AquaFlash® System

NOTE:

1. DRYVIT AQUAFLASH SHALL EXTEND TO INTERIOR FACE OF OPENING.
2. REFER TO HEAD, SILL AND JAMB DETAILS FOR FLASHING INTEGRATION.
3. ASSOCIATED FLASHINGS PER MANUFACTURER'S RECOMMENDATIONS, CODE REQUIREMENTS AND PROJECT DOCUMENTS.

The architecture, engineering, and design of the project using the Dryvit products is the responsibility of the project's design professional. All systems must comply with local building codes and standards. This detail is for general information and guidance only and Dryvit specifically disclaims any liability for the use of this detail and for the architecture, design, engineering or workmanship of any project. The project design professional determines, in its sole discretion, whether this detail or a functionally equivalent detail is best suited for the project. Use of a functionally equivalent detail does not violate Dryvit's warranty. This detail is subject to change without notice. Contact Dryvit to ensure you have the most recent version.





Commercial Cement Plaster 3™

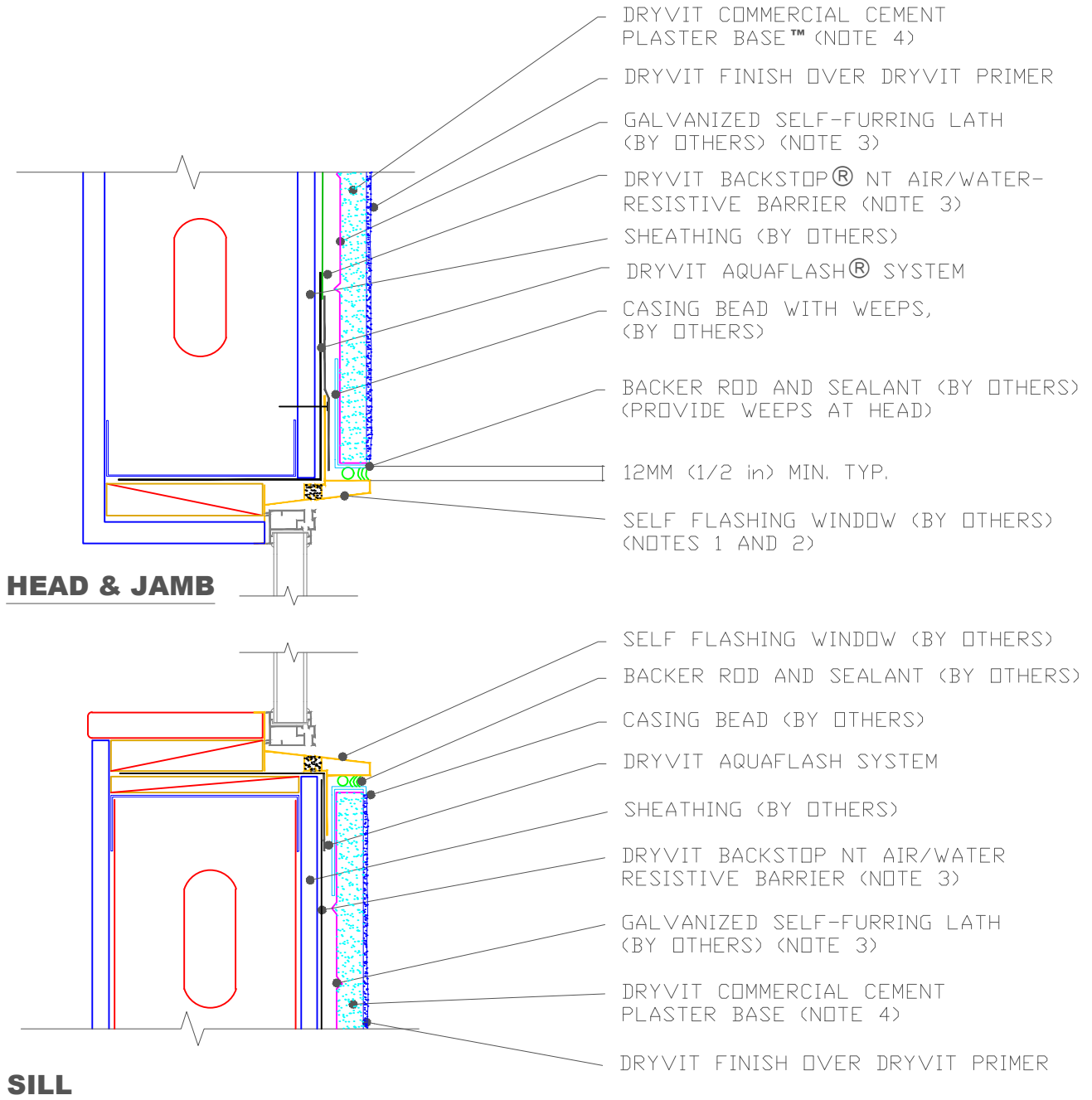
Termination at Wood Window

NOTE:

1. BACKSTOP NT AIR/WATER-RESISTIVE BARRIER REQUIRES USE OF A SLIP SHEET LAYER SUCH AS #15 FELT OR PAPER BACKED LATH.
2. OTHER APPROVED SCRATCH AND BROWN COATS MAY BE ACCEPTABLE. CONSULT DRYVIT SYSTEMS, INC. FOR SPECIFICS.

The architecture, engineering, and design of the project using the Dryvit products is the responsibility of the project's design professional. All systems must comply with local building codes and standards. This detail is for general information and guidance only and Dryvit specifically disclaims any liability for the use of this detail and for the architecture, design, engineering or workmanship of any project. The project design professional determines, in its sole discretion, whether this detail or a functionally equivalent detail is best suited for the project. Use of a functionally equivalent detail does not violate Dryvit's warranty. This detail is subject to change without notice. Contact Dryvit to ensure you have the most recent version.





Commercial Cement Plaster 3™

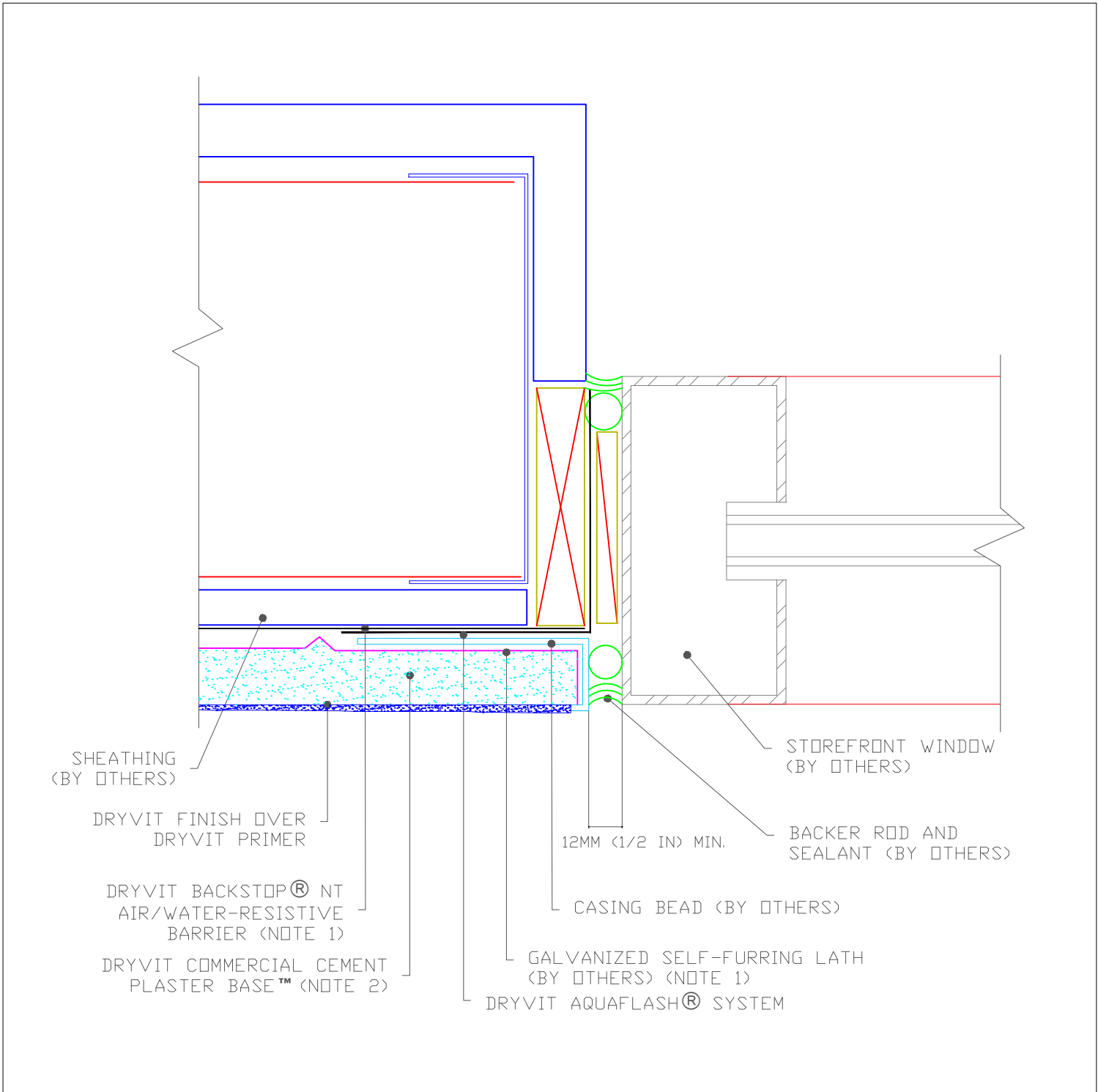
Termination at Self Flashing Nail-On Window

NOTE:

- ALTERNATE DETAIL AT WINDOW HEAD WOULD INCLUDE METAL FLASHING WITH END DAMS
- ADDITIONAL FLASHING MAY BE REQUIRED FOR WINDOWS THAT ARE NOT SELF FLASHING
- BACKSTOP NT AIR/WATER-RESISTIVE BARRIER REQUIRES USE OF A SLIP SHEET LAYER SUCH AS #15 FELT OR PAPER BACKED LATH.
- OTHER APPROVED SCRATCH AND BROWN COATS MAY BE ACCEPTABLE. CONSULT DRYVIT SYSTEMS, INC. FOR SPECIFICS.

The architecture, engineering, and design of the project using the Dryvit products is the responsibility of the project's design professional. All systems must comply with local building codes and standards. This detail is for general information and guidance only and Dryvit specifically disclaims any liability for the use of this detail and for the architecture, design, engineering or workmanship of any project. The project design professional determines, in its sole discretion, whether this detail or a functionally equivalent detail is best suited for the project. Use of a functionally equivalent detail does not violate Dryvit's warranty. This detail is subject to change without notice. Contact Dryvit to ensure you have the most recent version.





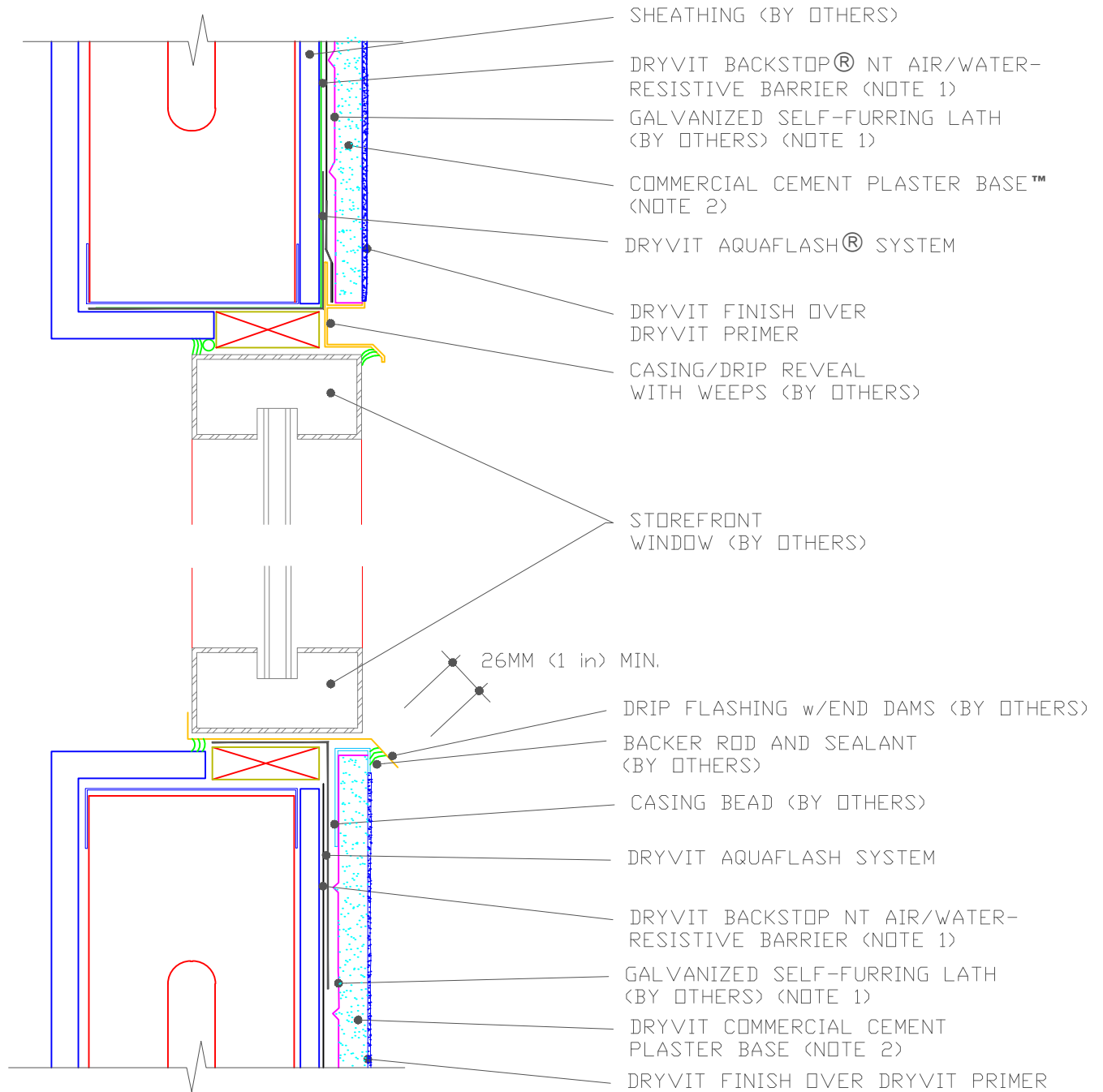
Commercial Cement Plaster 3™ Termination at Storefront Window-Jamb

NOTE:

1. BACKSTOP NT AIR/WATER-RESISTIVE BARRIER REQUIRES USE OF A SLIP SHEET LAYER SUCH AS #15 FELT OR PAPER BACKED LATH.
2. OTHER APPROVED SCRATCH AND BROWN COATS MAY BE ACCEPTABLE. CONSULT DRYVIT SYSTEMS, INC. FOR SPECIFICS.

The architecture, engineering, and design of the project using the Dryvit products is the responsibility of the project's design professional. All systems must comply with local building codes and standards. This detail is for general information and guidance only and Dryvit specifically disclaims any liability for the use of this detail and for the architecture, design, engineering or workmanship of any project. The project design professional determines, in its sole discretion, whether this detail or a functionally equivalent detail is best suited for the project. Use of a functionally equivalent detail does not violate Dryvit's warranty. This detail is subject to change without notice. Contact Dryvit to ensure you have the most recent version.





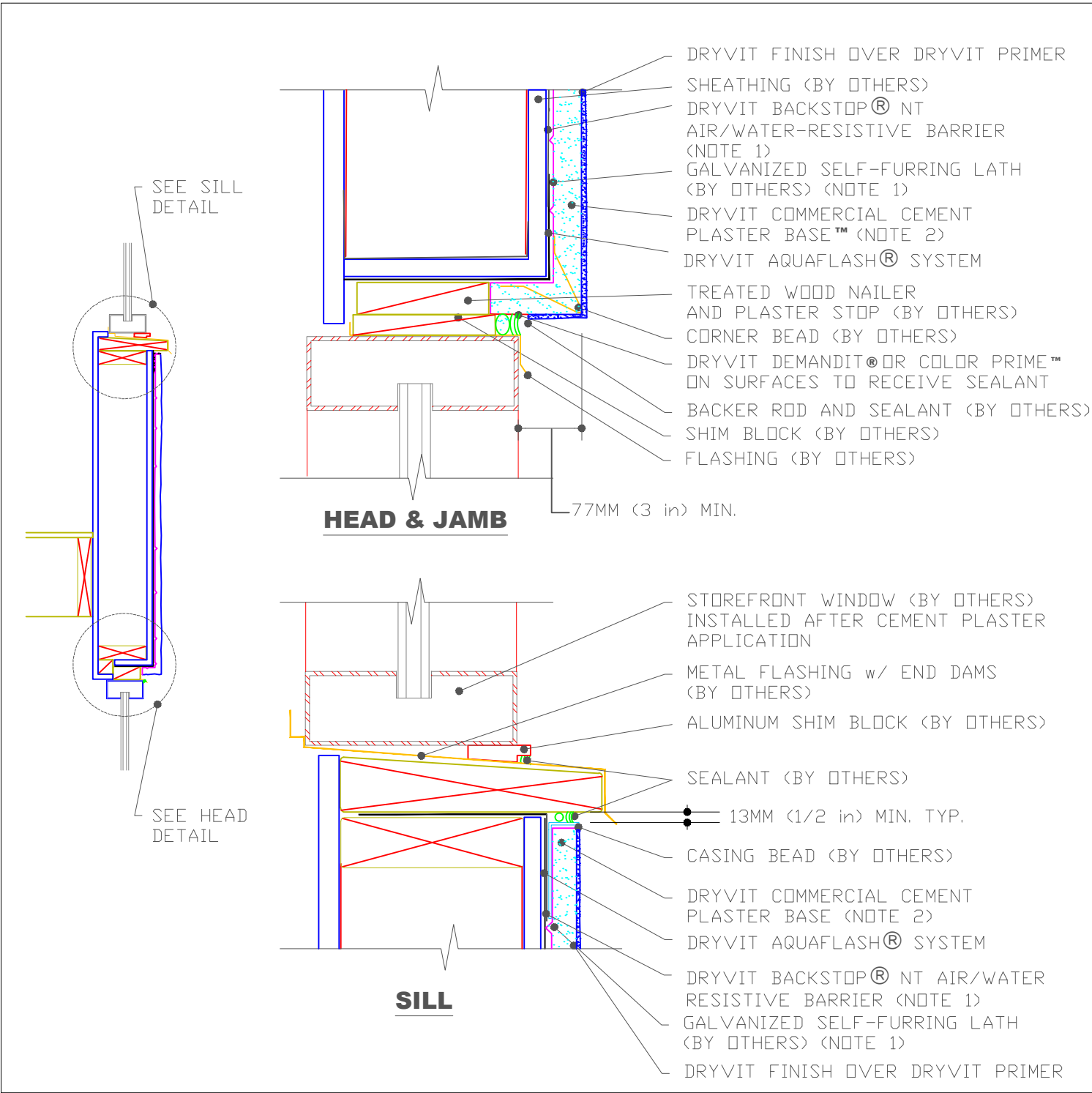
Commercial Cement Plaster 3™ Termination at Storefront Window-Head+Sill

NOTE:

1. BACKSTOP NT AIR/WATER-RESISTIVE BARRIER REQUIRES USE OF A SLIP SHEET LAYER SUCH AS #15 FELT OR PAPER BACKED LATH.
2. OTHER APPROVED SCRATCH AND BROWN COATS MAY BE ACCEPTABLE. CONSULT DRYVIT SYSTEMS, INC. FOR SPECIFICS.

The architecture, engineering, and design of the project using the Dryvit products is the responsibility of the project's design professional. All systems must comply with local building codes and standards. This detail is for general information and guidance only and Dryvit specifically disclaims any liability for the use of this detail and for the architecture, design, engineering or workmanship of any project. The project design professional determines, in its sole discretion, whether this detail or a functionally equivalent detail is best suited for the project. Use of a functionally equivalent detail does not violate Dryvit's warranty. This detail is subject to change without notice. Contact Dryvit to ensure you have the most recent version.





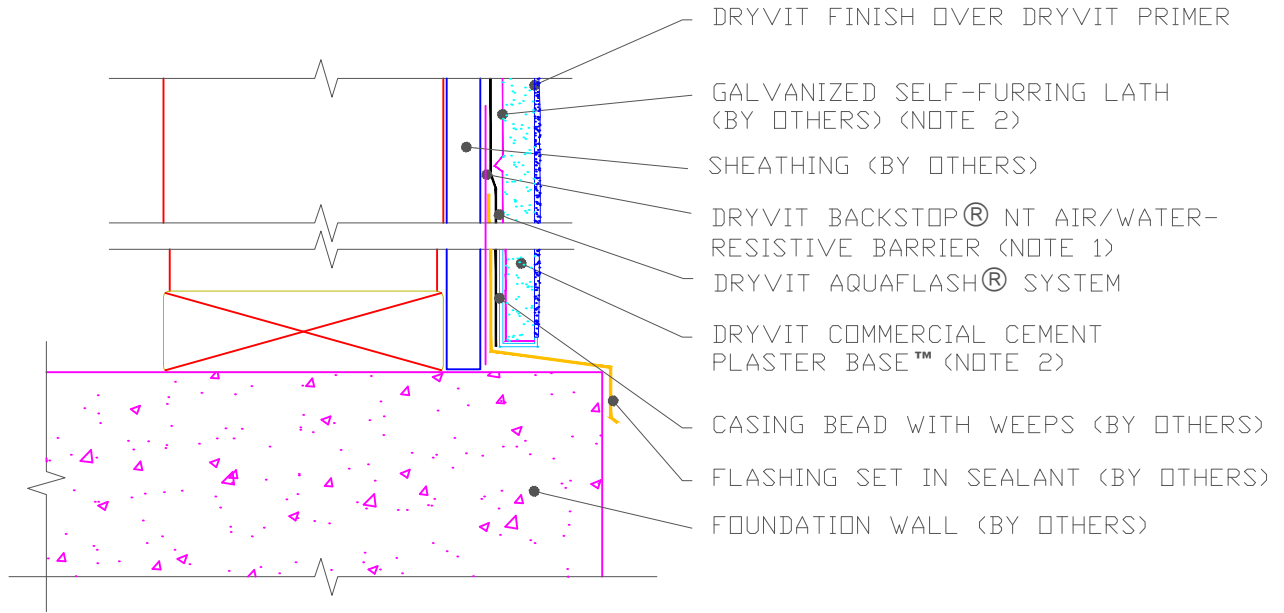
Commercial Cement Plaster 3™ Termination at Storefront Window Setback

NOTE:

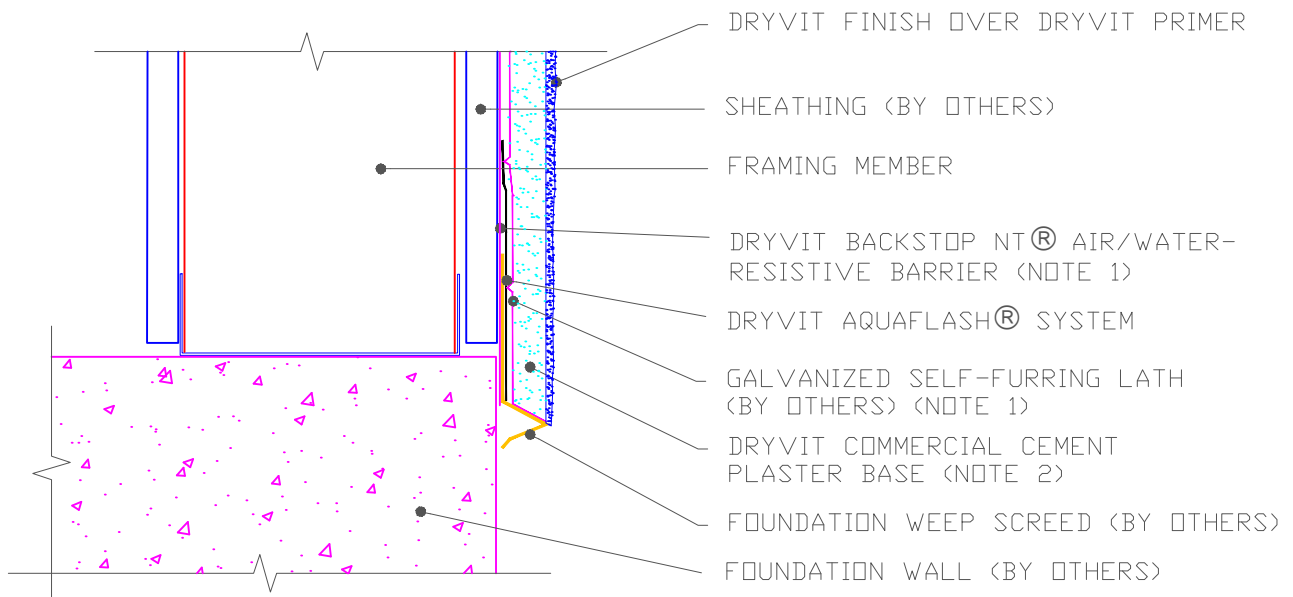
1. BACKSTOP NT AIR/WATER-RESISTIVE BARRIER REQUIRES USE OF A SLIP SHEET LAYER SUCH AS #15 FELT OR PAPER BACKED LATH.
2. OTHER APPROVED SCRATCH AND BROWN COATS MAY BE ACCEPTABLE. CONSULT DRYVIT SYSTEMS, INC. FOR SPECIFICS.

The architecture, engineering, and design of the project using the Dryvit products is the responsibility of the project's design professional. All systems must comply with local building codes and standards. This detail is for general information and guidance only and Dryvit specifically disclaims any liability for the use of this detail and for the architecture, design, engineering or workmanship of any project. The project design professional determines, in its sole discretion, whether this detail or a functionally equivalent detail is best suited for the project. Use of a functionally equivalent detail does not violate Dryvit's warranty. This detail is subject to change without notice. Contact Dryvit to ensure you have the most recent version.





CASING BEAD AT CONCRETE FOUNDATION



WEEP SCREED AT CONCRETE FOUNDATION

Commercial Cement Plaster 3™

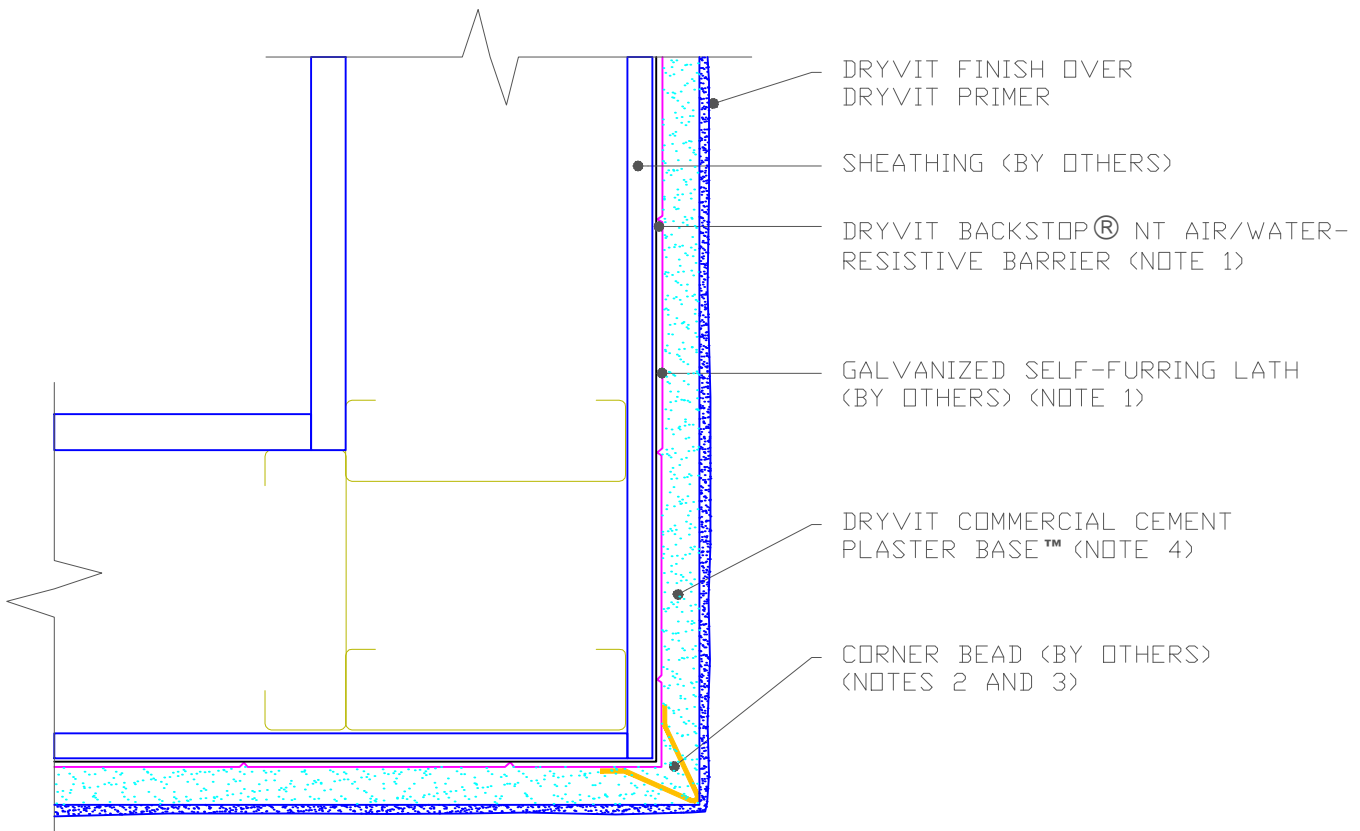
Termination at Concrete Foundation

NOTE:

1. BACKSTOP NT AIR/WATER-RESISTIVE BARRIER REQUIRES USE OF A SLIP SHEET LAYER SUCH AS #15 FELT OR PAPER BACKED LATH.
2. OTHER APPROVED SCRATCH AND BROWN COATS MAY BE ACCEPTABLE. CONSULT DRYVIT SYSTEMS, INC. FOR SPECIFICS.

The architecture, engineering, and design of the project using the Dryvit products is the responsibility of the project's design professional. All systems must comply with local building codes and standards. This detail is for general information and guidance only and Dryvit specifically disclaims any liability for the use of this detail and for the architecture, design, engineering or workmanship of any project. The project design professional determines, in its sole discretion, whether this detail or a functionally equivalent detail is best suited for the project. Use of a functionally equivalent detail does not violate Dryvit's warranty. This detail is subject to change without notice. Contact Dryvit to ensure you have the most recent version.





Commercial Cement Plaster 3™

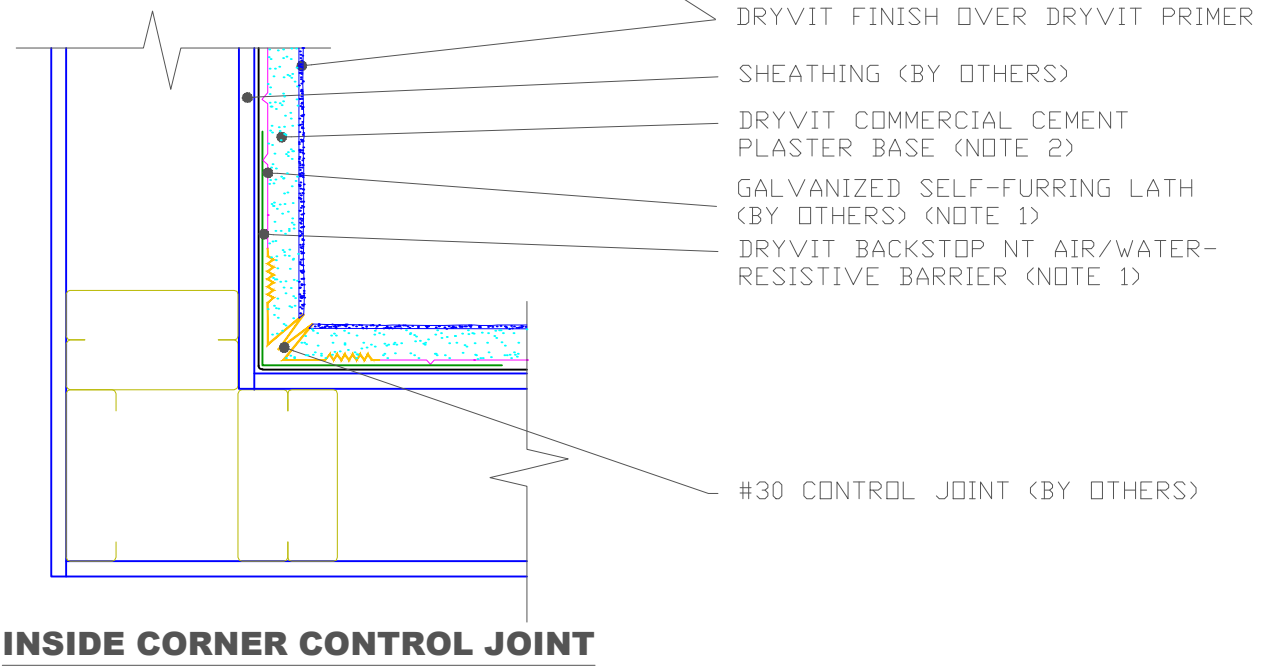
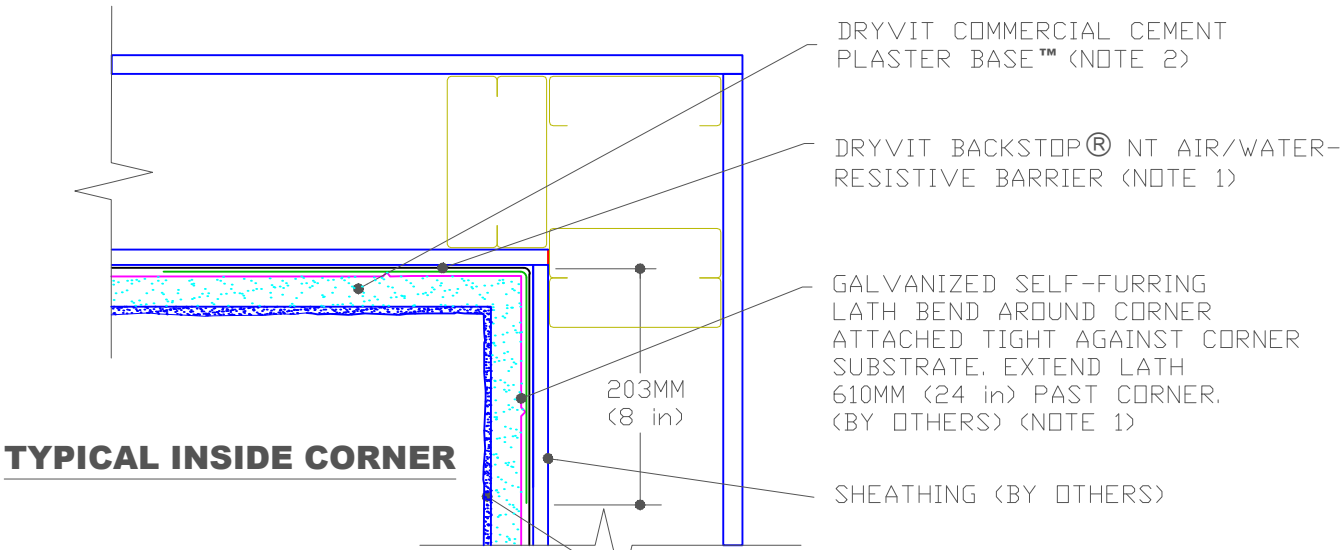
Outside Corner

NOTE:

1. BACKSTOP NT AIR/WATER-RESISTIVE BARRIER REQUIRES USE OF A SLIP SHEET LAYER SUCH AS #15 FELT OR PAPER BACKED LATH.
2. WELDED WIRE, PLASTIC NOSE, OR PVC CORNER TRIM MAY BE USED.
3. FILL SPACE SOLID WITH PLASTER BASE
4. OTHER APPROVED SCRATCH AND BROWN COATS MAY BE ACCEPTABLE. CONSULT DRYVIT SYSTEMS, INC. FOR SPECIFICS.

The architecture, engineering, and design of the project using the Dryvit products is the responsibility of the project's design professional. All systems must comply with local building codes and standards. This detail is for general information and guidance only and Dryvit specifically disclaims any liability for the use of this detail and for the architecture, design, engineering or workmanship of any project. The project design professional determines, in its sole discretion, whether this detail or a functionally equivalent detail is best suited for the project. Use of a functionally equivalent detail does not violate Dryvit's warranty. This detail is subject to change without notice. Contact Dryvit to ensure you have the most recent version.





Commercial Cement Plaster 3™

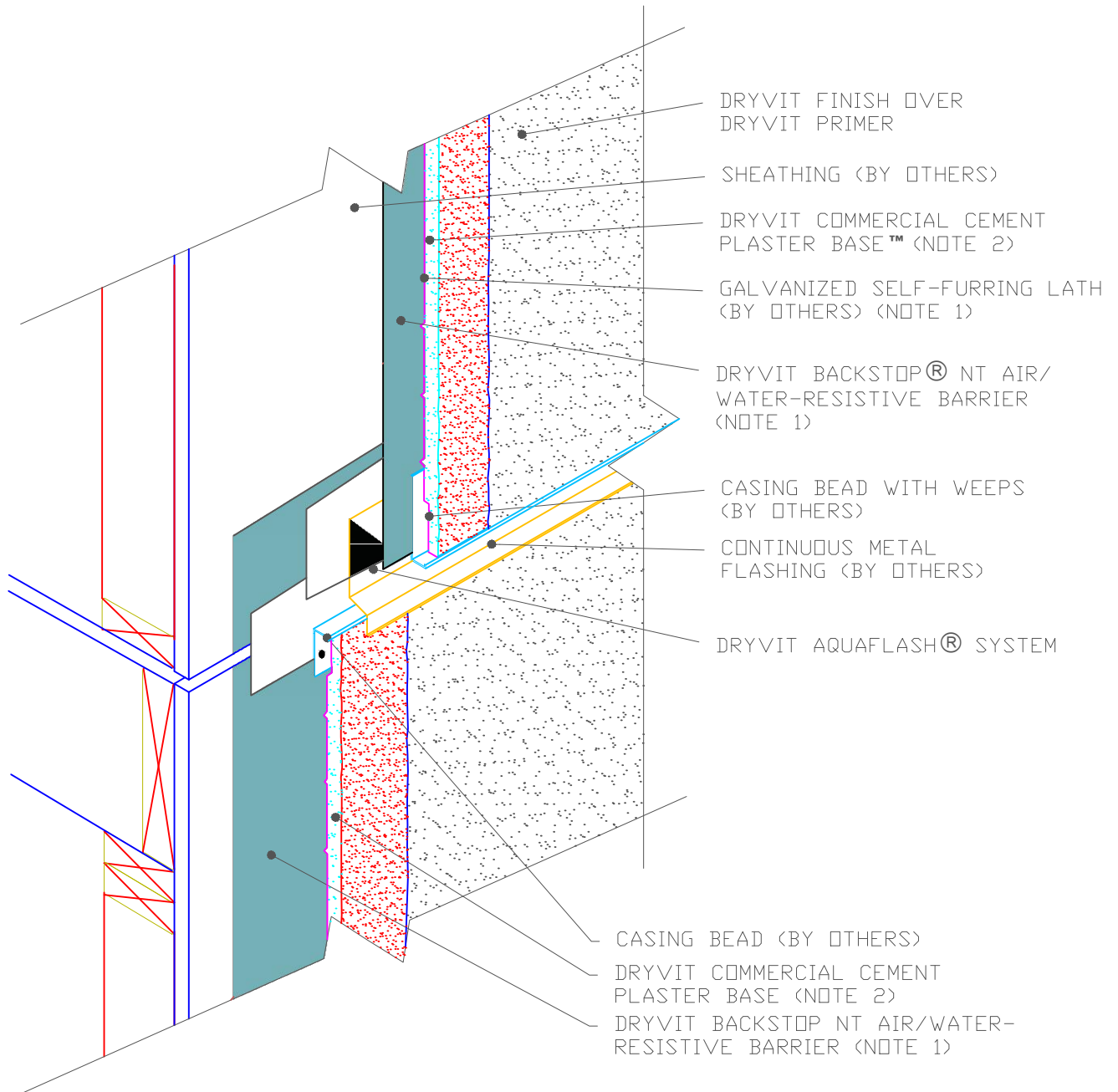
Inside Corner Detail

NOTE:

1. BACKSTOP NT AIR/WATER-RESISTIVE BARRIER REQUIRES USE OF A SLIP SHEET LAYER SUCH AS #15 FELT OR PAPER BACKED LATH.
2. OTHER APPROVED SCRATCH AND BROWN COATS MAY BE ACCEPTABLE. CONSULT DRYVIT SYSTEMS, INC. FOR SPECIFICS.

The architecture, engineering, and design of the project using the Dryvit products is the responsibility of the project's design professional. All systems must comply with local building codes and standards. This detail is for general information and guidance only and Dryvit specifically disclaims any liability for the use of this detail and for the architecture, design, engineering or workmanship of any project. The project design professional determines, in its sole discretion, whether this detail or a functionally equivalent detail is best suited for the project. Use of a functionally equivalent detail does not violate Dryvit's warranty. This detail is subject to change without notice. Contact Dryvit to ensure you have the most recent version.





Commercial Cement Plaster 3™

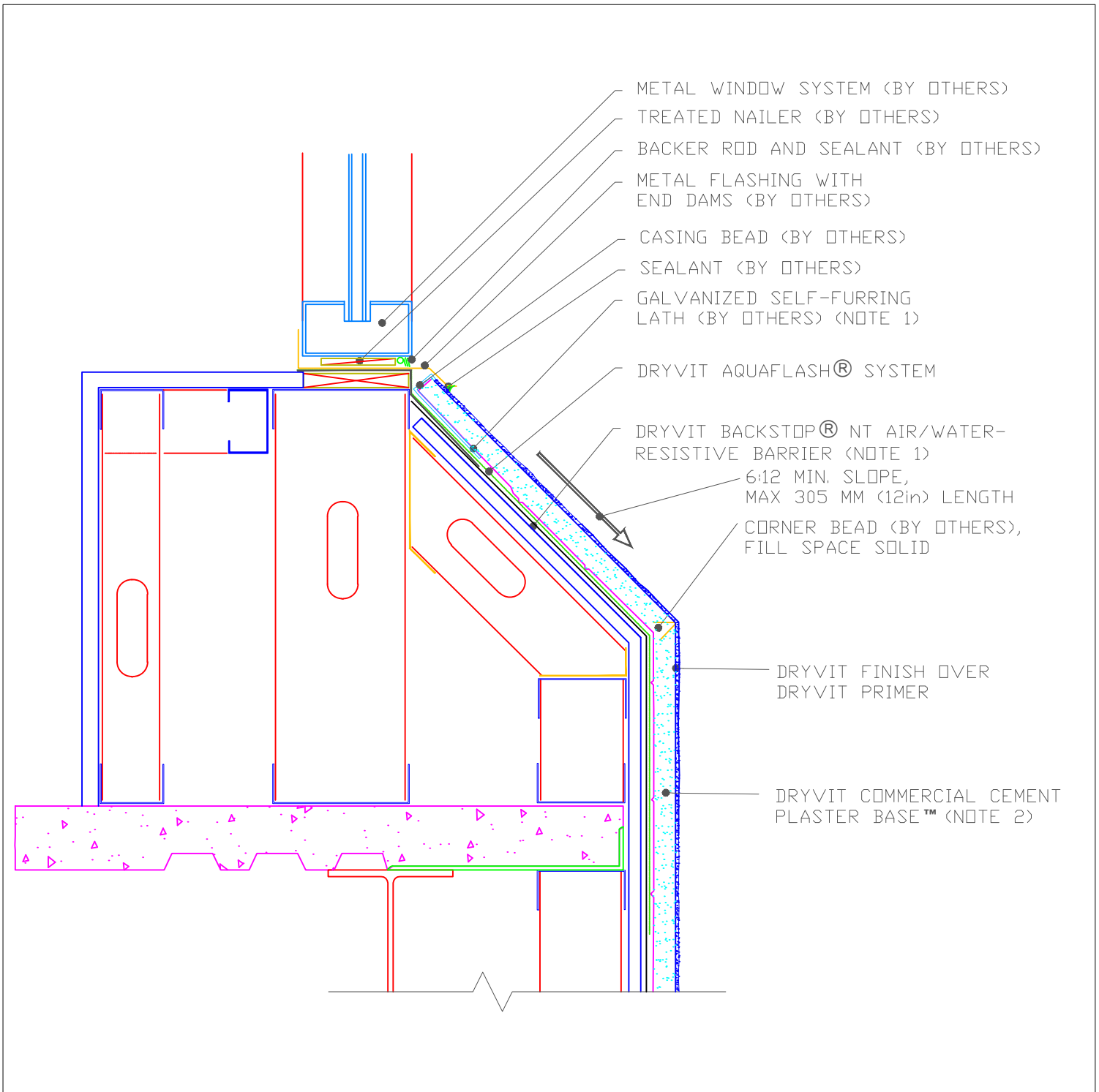
Horizontal Flashing & Expansion Joint

NOTE:

1. BACKSTOP NT AIR/WATER-RESISTIVE BARRIER REQUIRES USE OF A SLIP SHEET LAYER SUCH AS #15 FELT OR PAPER BACKED LATH.
2. OTHER APPROVED SCRATCH AND BROWN COATS MAY BE ACCEPTABLE. CONSULT DRYVIT SYSTEMS, INC. FOR SPECIFICS.

The architecture, engineering, and design of the project using the Dryvit products is the responsibility of the project's design professional. All systems must comply with local building codes and standards. This detail is for general information and guidance only and Dryvit specifically disclaims any liability for the use of this detail and for the architecture, design, engineering or workmanship of any project. The project design professional determines, in its sole discretion, whether this detail or a functionally equivalent detail is best suited for the project. Use of a functionally equivalent detail does not violate Dryvit's warranty. This detail is subject to change without notice. Contact Dryvit to ensure you have the most recent version.





Commercial Cement Plaster 3™

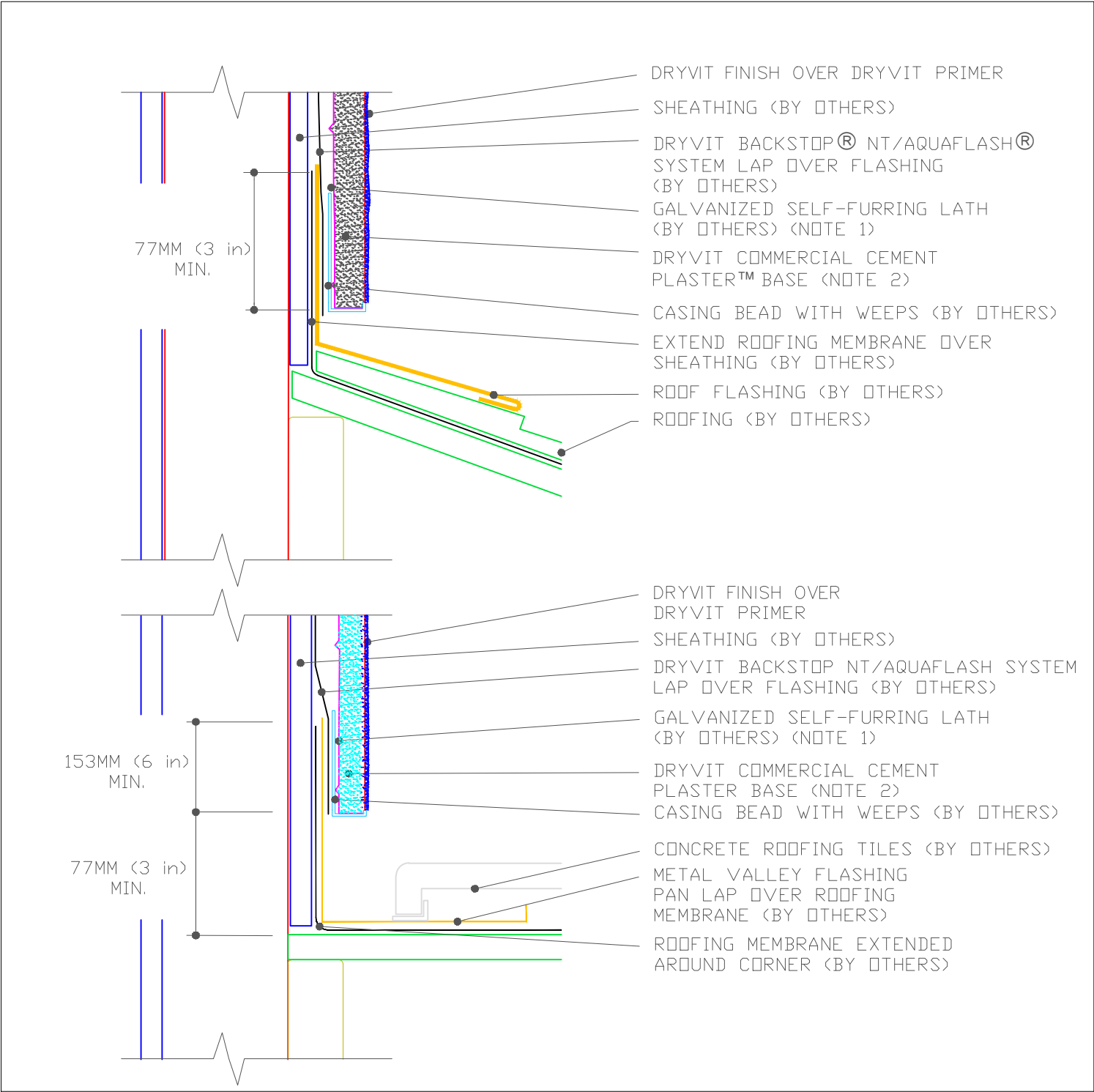
Sloped Sill

NOTE:

1. BACKSTOP NT AIR/WATER-RESISTIVE BARRIER REQUIRES USE OF A SLIP SHEET LAYER SUCH AS #15 FELT OR PAPER BACKED LATH.
2. OTHER APPROVED SCRATCH AND BROWN COATS MAY BE ACCEPTABLE. CONSULT DRYVIT SYSTEMS, INC. FOR SPECIFICS.

The architecture, engineering, and design of the project using the Dryvit products is the responsibility of the project's design professional. All systems must comply with local building codes and standards. This detail is for general information and guidance only and Dryvit specifically disclaims any liability for the use of this detail and for the architecture, design, engineering or workmanship of any project. The project design professional determines, in its sole discretion, whether this detail or a functionally equivalent detail is best suited for the project. Use of a functionally equivalent detail does not violate Dryvit's warranty. This detail is subject to change without notice. Contact Dryvit to ensure you have the most recent version.





Commercial Cement Plaster 3™

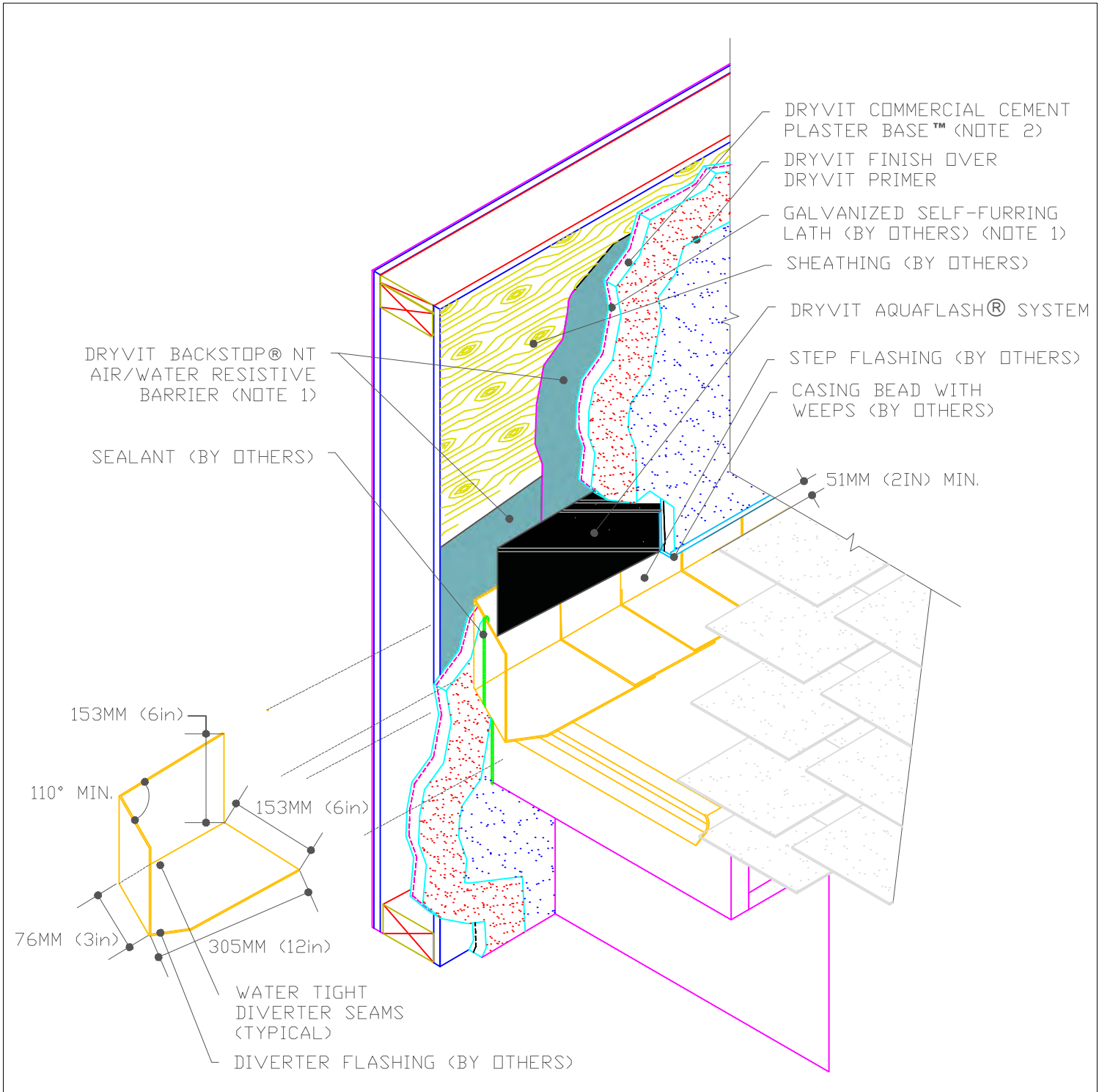
Termination at Roof

NOTE:

- 1. BACKSTOP NT AIR/WATER-RESISTIVE BARRIER REQUIRES USE OF A SLIP SHEET LAYER SUCH AS #15 FELT OR PAPER BACKED LATH.
- 2. OTHER APPROVED SCRATCH AND BROWN COATS MAY BE ACCEPTABLE. CONSULT DRYVIT SYSTEMS, INC. FOR SPECIFICS.

The architecture, engineering, and design of the project using the Dryvit products is the responsibility of the project's design professional. All systems must comply with local building codes and standards. This detail is for general information and guidance only and Dryvit specifically disclaims any liability for the use of this detail and for the architecture, design, engineering or workmanship of any project. The project design professional determines, in its sole discretion, whether this detail or a functionally equivalent detail is best suited for the project. Use of a functionally equivalent detail does not violate Dryvit's warranty. This detail is subject to change without notice. Contact Dryvit to ensure you have the most recent version.





Commercial Cement Plaster 3™

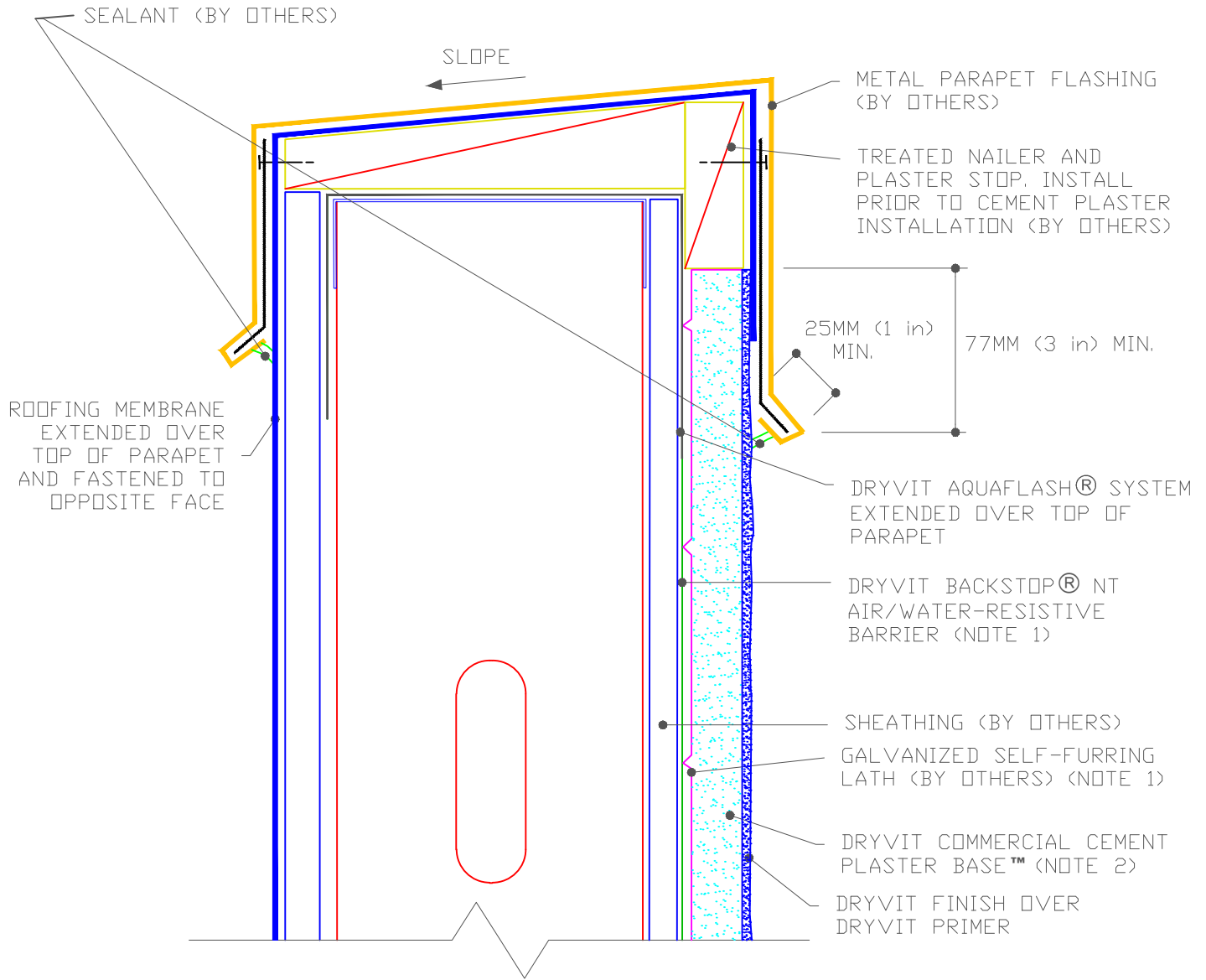
Termination at Roof/Wall Intersection

NOTE:

1. BACKSTOP NT AIR/WATER-RESISTIVE BARRIER REQUIRES USE OF A SLIP SHEET LAYER SUCH AS #15 FELT OR PAPER BACKED LATH.
2. OTHER APPROVED SCRATCH AND BROWN COATS MAY BE ACCEPTABLE. CONSULT DRYVIT SYSTEMS, INC. FOR SPECIFICS.

The architecture, engineering, and design of the project using the Dryvit products is the responsibility of the project's design professional. All systems must comply with local building codes and standards. This detail is for general information and guidance only and Dryvit specifically disclaims any liability for the use of this detail and for the architecture, design, engineering or workmanship of any project. The project design professional determines, in its sole discretion, whether this detail or a functionally equivalent detail is best suited for the project. Use of a functionally equivalent detail does not violate Dryvit's warranty. This detail is subject to change without notice. Contact Dryvit to ensure you have the most recent version.





Commercial Cement Plaster 3™

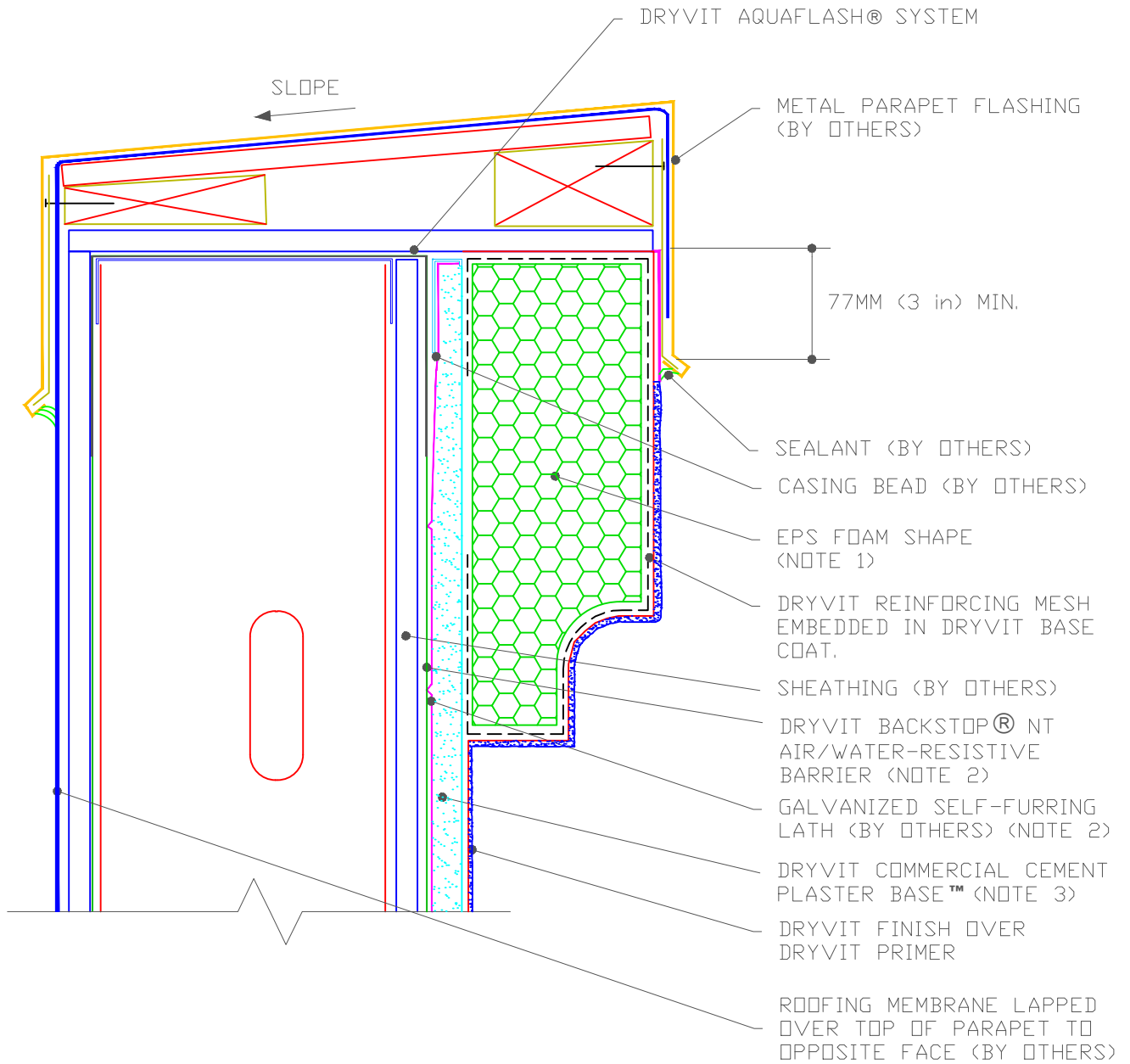
Parapet Flashing

NOTE:

1. BACKSTOP NT AIR/WATER-RESISTIVE BARRIER REQUIRES USE OF A SLIP SHEET LAYER SUCH AS #15 FELT OR PAPER BACKED LATH.
2. OTHER APPROVED SCRATCH AND BROWN COATS MAY BE ACCEPTABLE. CONSULT DRYVIT SYSTEMS, INC. FOR SPECIFICS.

The architecture, engineering, and design of the project using the Dryvit products is the responsibility of the project's design professional. All systems must comply with local building codes and standards. This detail is for general information and guidance only and Dryvit specifically disclaims any liability for the use of this detail and for the architecture, design, engineering or workmanship of any project. The project design professional determines, in its sole discretion, whether this detail or a functionally equivalent detail is best suited for the project. Use of a functionally equivalent detail does not violate Dryvit's warranty. This detail is subject to change without notice. Contact Dryvit to ensure you have the most recent version.





Commercial Cement Plaster 3™

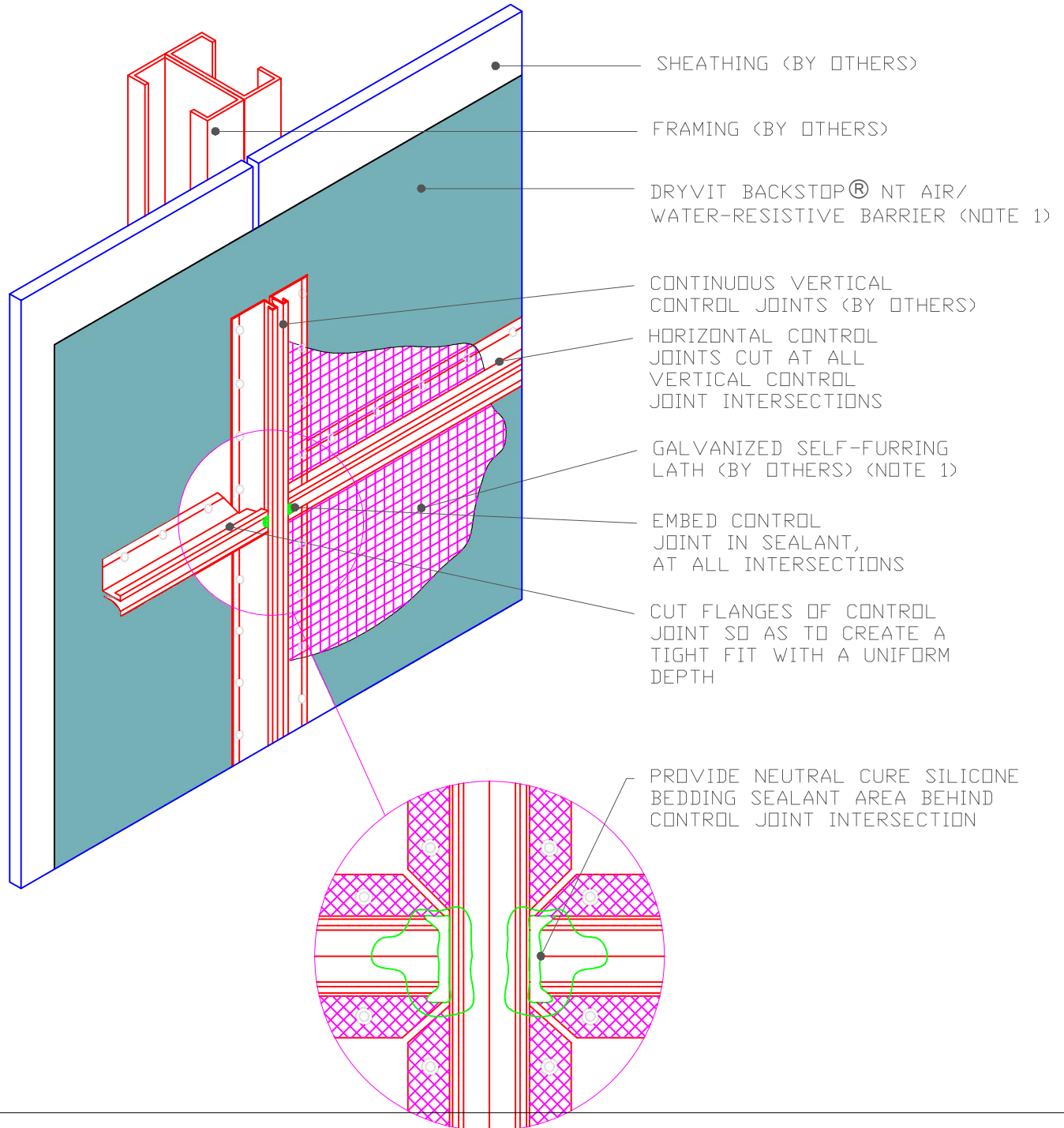
EPS Cornice

NOTE:

1. ADHESIVELY ATTACH EPS SHAPE TO CEMENT PLASTER BASE COAT WITH GENESIS OR GENESIS DM BASE COAT.
2. BACKSTOP NT AIR/WATER-RESISTIVE BARRIER REQUIRES USE OF A SLIP SHEET LAYER SUCH AS #15 FELT OR PAPER BACKED LATH.
3. OTHER APPROVED SCRATCH AND BROWN COATS MAY BE ACCEPTABLE. CONSULT DRYVIT SYSTEMS, INC. FOR SPECIFICS.

The architecture, engineering, and design of the project using the Dryvit products is the responsibility of the project's design professional. All systems must comply with local building codes and standards. This detail is for general information and guidance only and Dryvit specifically disclaims any liability for the use of this detail and for the architecture, design, engineering or workmanship of any project. The project design professional determines, in its sole discretion, whether this detail or a functionally equivalent detail is best suited for the project. Use of a functionally equivalent detail does not violate Dryvit's warranty. This detail is subject to change without notice. Contact Dryvit to ensure you have the most recent version.





Commercial Cement Plaster 3™

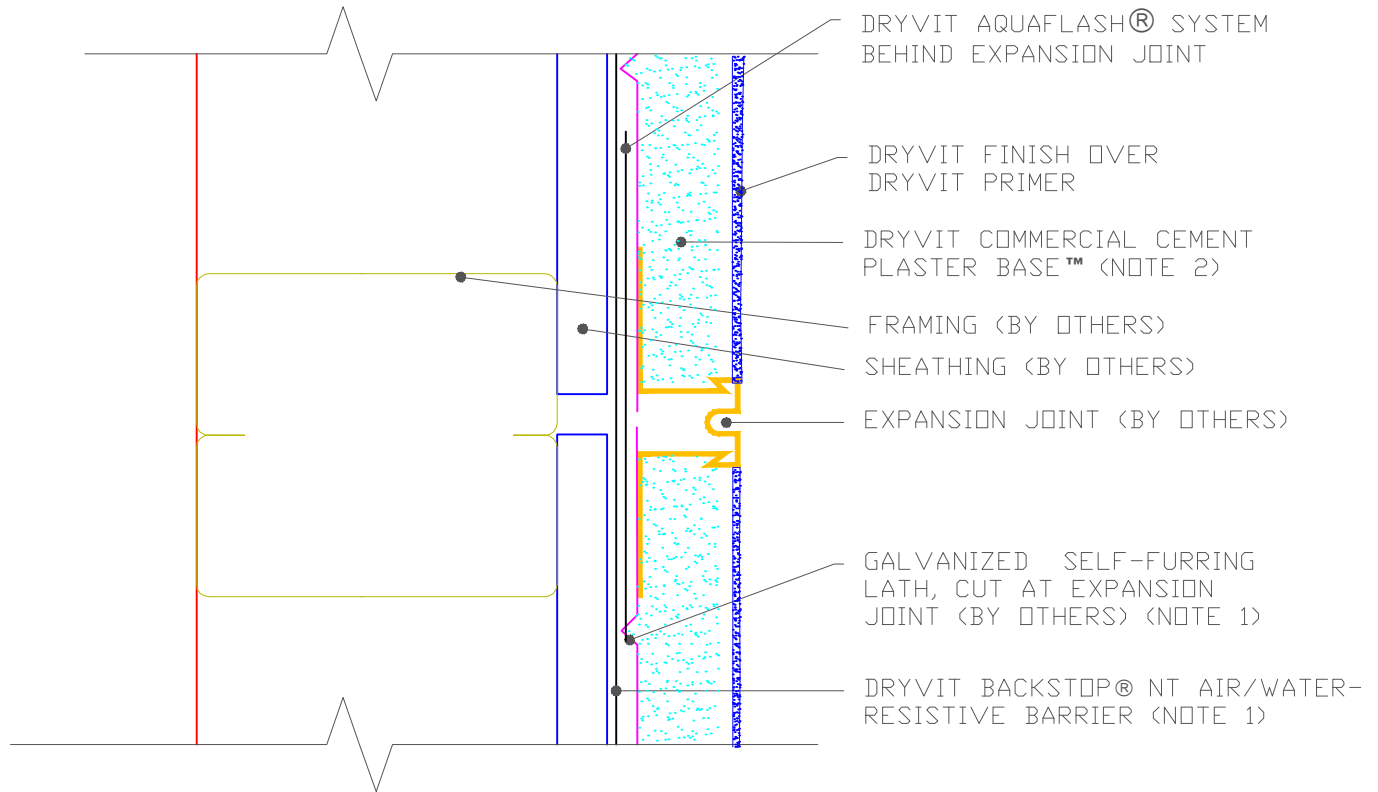
Control Joint Intersection

NOTE:

1. BACKSTOP NT AIR/WATER-RESISTIVE BARRIER REQUIRES USE OF A SLIP SHEET LAYER SUCH AS #15 FELT OR PAPER BACKED LATH.

The architecture, engineering, and design of the project using the Dryvit products is the responsibility of the project's design professional. All systems must comply with local building codes and standards. This detail is for general information and guidance only and Dryvit specifically disclaims any liability for the use of this detail and for the architecture, design, engineering or workmanship of any project. The project design professional determines, in its sole discretion, whether this detail or a functionally equivalent detail is best suited for the project. Use of a functionally equivalent detail does not violate Dryvit's warranty. This detail is subject to change without notice. Contact Dryvit to ensure you have the most recent version.





DRYVIT AQUAFLASH® SYSTEM
BEHIND EXPANSION JOINT

DRYVIT FINISH OVER
DRYVIT PRIMER

DRYVIT COMMERCIAL CEMENT
PLASTER BASE™ (NOTE 2)

FRAMING (BY OTHERS)

SHEATHING (BY OTHERS)

EXPANSION JOINT (BY OTHERS)

GALVANIZED SELF-FURRING
LATH, CUT AT EXPANSION
JOINT (BY OTHERS) (NOTE 1)

DRYVIT BACKSTOP® NT AIR/WATER-
RESISTIVE BARRIER (NOTE 1)

Commercial Cement Plaster 3™

Horizontal or Vertical
One-Piece Expansion Joint

NOTE:

1. BACKSTOP NT AIR/WATER-RESISTIVE BARRIER REQUIRES USE OF A SLIP SHEET LAYER SUCH AS #15 FELT OR PAPER BACKED LATH.
2. OTHER APPROVED SCRATCH AND BROWN COATS MAY BE ACCEPTABLE. CONSULT DRYVIT SYSTEMS, INC. FOR SPECIFICS.

The architecture, engineering, and design of the project using the Dryvit products is the responsibility of the project's design professional. All systems must comply with local building codes and standards. This detail is for general information and guidance only and Dryvit specifically disclaims any liability for the use of this detail and for the architecture, design, engineering or workmanship of any project. The project design professional determines, in its sole discretion, whether this detail or a functionally equivalent detail is best suited for the project. Use of a functionally equivalent detail does not violate Dryvit's warranty. This detail is subject to change without notice. Contact Dryvit to ensure you have the most recent version.

