

METAL LATH INSTALLATION

DS421

An Alternative Method for Installation of the Dryvit Outsulation® System

Description

Expanded Metal Lath allows for the installation of the Dryvit Outsulation System to substrates which would not normally accept adhesive attachment. This attachment method combined with appropriate stud sizing and screw spacing, etc., can also be used to achieve wind load capabilities higher than generally attainable with some sheathing substrates.

Uses

Metal Lath provides a cost-effective alternative for walls which could not normally accept an adhesive application, such as:

- Brick, masonry, or concrete with spalling surfaces or blistered, peeling paint
- Glazed brick or tile
- Metal facings
- Masonry surfaces to which a water repellent sealer has been applied
- Old wood sheathing and sidings

NOTE: Except for concrete and masonry, a code-approved water-resistive barrier is required over substrates complying with IRC and IBC Type V, Groups R1 - R4 occupancies. Refer to Dryvit Outsulation LCMD Systems for proper configuration.

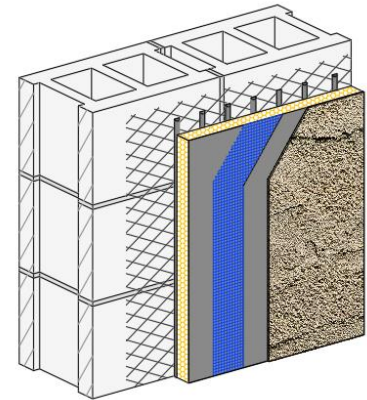
Metal Lath may also be installed over exterior sheathing to provide for the attachment of the Dryvit Outsulation System to a mechanically fastened surface. In addition, mechanical keying of the adhesive into the lath eliminates thermal bridges inherent with conventional surface-mounted fastening systems.

Self-furred lath may be used to smooth out minor substrate imperfections.

Specifications

The lath shall be either 3.4 lbs/sq yd or 2.5 lbs/sq yd (1.9 kg/m² or 1.4 kg/m²) weight Expanded Metal Lath (Diamond Mesh) which has been galvanized or coated with rust inhibitive paint. The lath must meet Federal Specification QQ-L-101C and be of Type F (Flat base) or Type SF (Self-Furring base).

Attachment of the lath to the wall will depend on substrate type and condition as well as wall design criteria. The architect/engineer shall specify the fastener type and spacing as appropriate for the specific project.



Installation

The Metal Lath shall be installed as per the contract documents and the lath manufacturer's, instructions with fastener type and spacing as specified by the building designer.

The Dryvit Outsulation System is installed over the Metal Lath in accordance with Dryvit Systems, Inc.'s published Specifications, [DS118](#), and Application Instructions, [DS204](#).

Availability

Expanded Metal Lath is not manufactured or warranted by Dryvit Systems, Inc., and is readily available at most local building/plastering supply houses.

Technical and Field Services

Available upon request.

Dryvit Systems, Inc.
One Energy Way
West Warwick, RI 02893
800-556-7752
www.dryvit.com

Information contained in this product sheet conforms to the standard detail recommendations and specifications for the installation of Dryvit Systems, Inc. products as of the date of publication of this document and is presented in good faith. Dryvit Systems, Inc. assumes no liability, expressed or implied, as to the architecture, engineering or workmanship of any project. To ensure that you are using the latest, most complete information, contact Dryvit Systems, Inc.

For more information on [Dryvit Systems](#) or [Continuous Insulation](#), visit these links.

