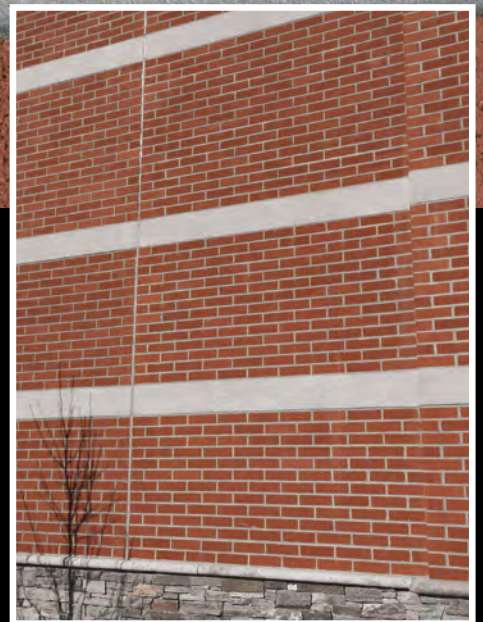
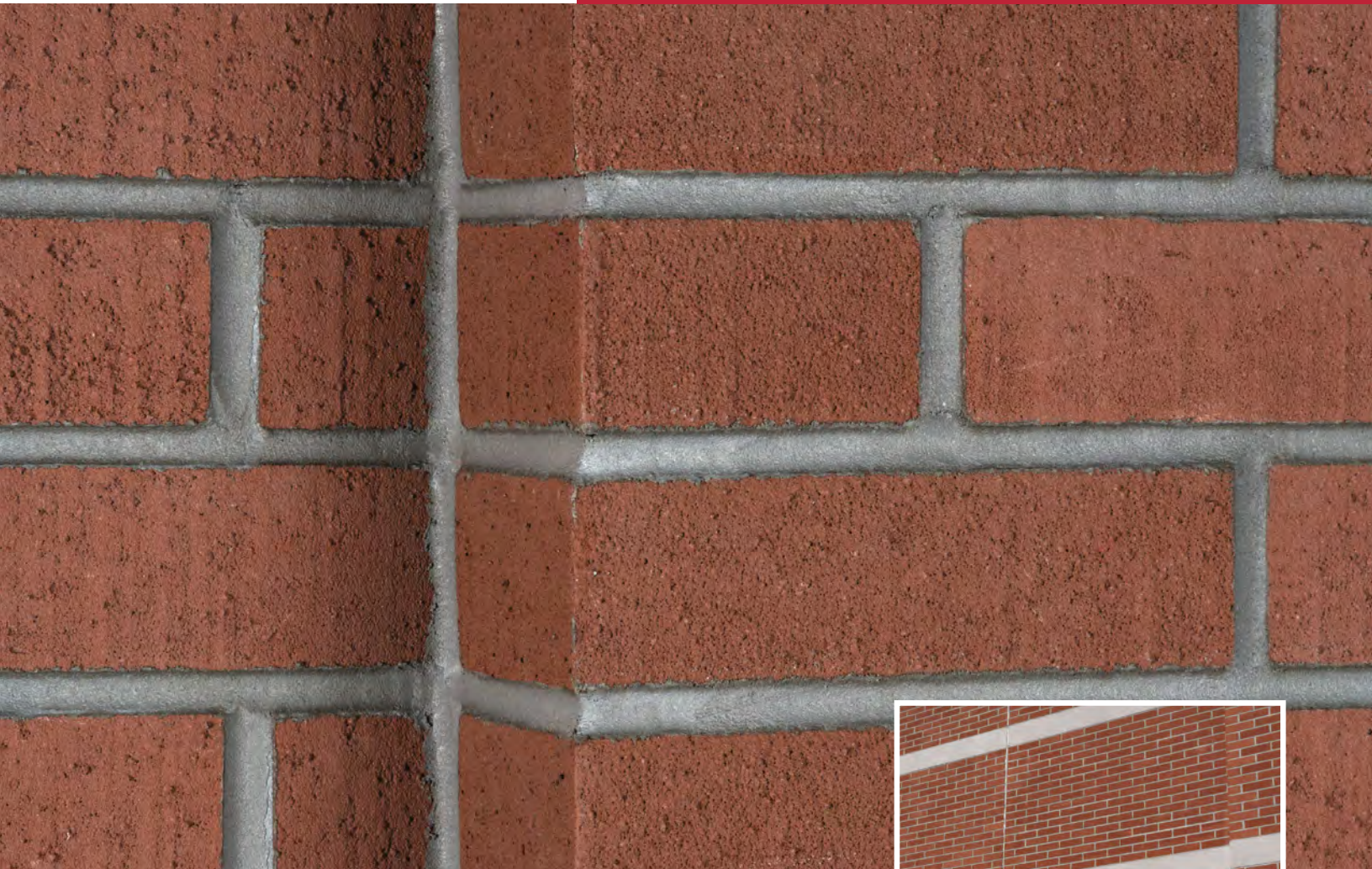


NEWBRICK™
by dryvit

Lightweight, insulated, energy efficient
cladding changing the way we think
about masonry construction.



Commercial Building
Shelton, CT



Office Building
Schenectady, NY

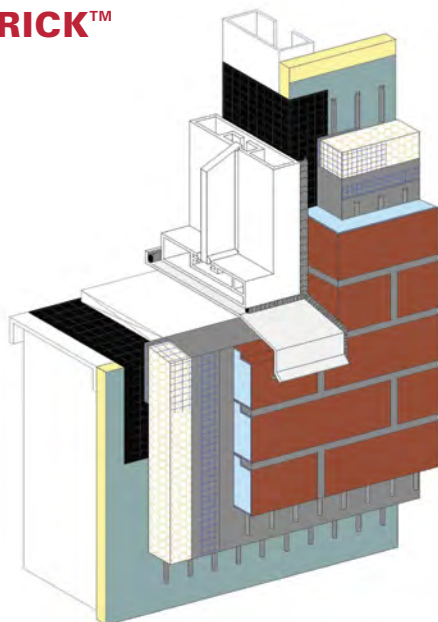


NEWBRICK™ IS DESIGNED WITH THE SAME TRADITIONAL BRICK APPEARANCE.

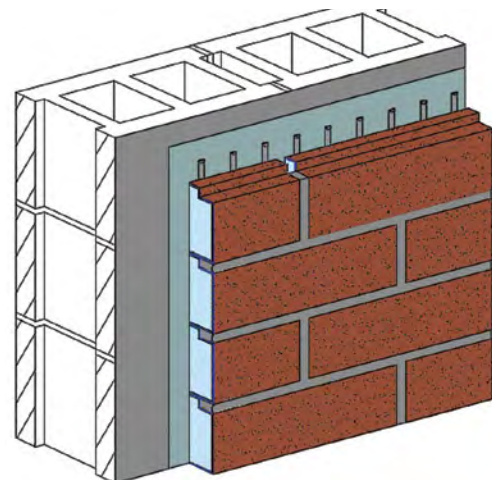
But, now with so much more!

NewBrick™, offers the industry a different way to build more **cost and energy efficient traditional looking** buildings from the ground up in a **faster and simpler way**. A game-changing innovation in exterior wall design that can be installed over most common building systems, including concrete and masonry, as well as over any Dryvit Outsulation® CI system.

NEWBRICK™



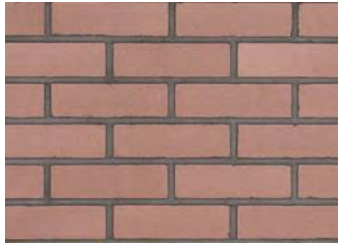
NEWBRICK™ WITH CI APPLICATION OVER AN OUTSULATION® SYSTEM



NEWBRICK™ VENEER OVER A SOLID SUBSTRATE

VERSATILE DESIGN CAPABILITY FOR ANY PROJECT.

NewBrick is available in 16 standard colors and four standard blends so you can create looks that run from traditional to modern. Custom colors and blends are available for your project's specifications.



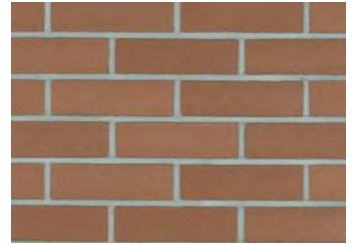
Cannon Dawn | 985BST



Castle Wall | 930BST



Citadel | 940BST



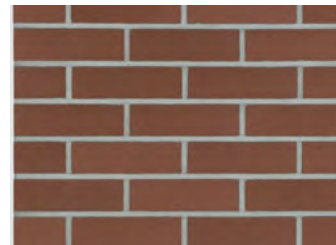
Country Cottage | 915BST



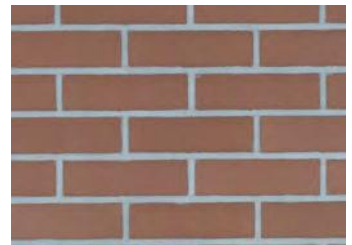
Earthen Vessel | 935BST



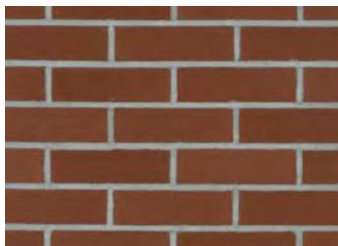
Gatehouse | 910BST



Harbor Side | 920BST



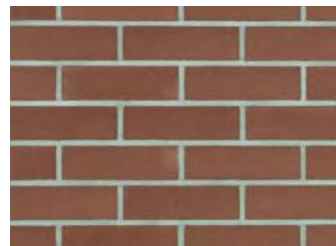
Heritage House | 965BST



Homeland | 950BST



Patriot Red | 970BST



Provincial Park | 960BST



Riverbank | 900BST



Rustic Villa | 945BST



School Yard | 925BST



Town Square | 980BST



Valley Field | 975BST

Colors shown should be considered approximate of actual NewBrick colors. Some natural variations will be apparent with the product relating to selected color, texture and lighting. A field installed mock-up should be required for every project to confirm design intent of color and texture.

STANDARD BLENDS AND TEXTURES

With NewBrick from Dryvit, the architect can now design cost effective and classic looking buildings. Below are available standard blends, textures, and effects. Custom matches can be provided on request.

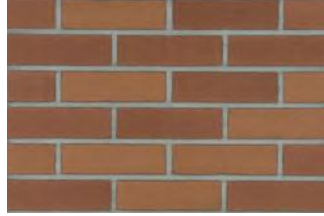
BLENDS



Corinth (60% Heritage House Flashed, 30% Heritage House, 10% Riverbank)



Georgetown (60% Heritage House, 30% Valley Field, 10% Riverbank)



Littleton (50% Provincial Park, 50% Country Cottage)



Rockland (60% Provincial Park, 30% Country Cottage, 10% Riverbank)

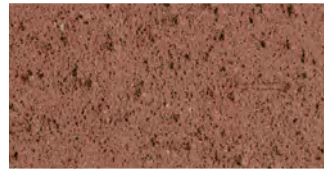
TEXTURES



Smooth



Velour

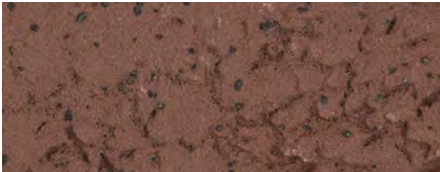


Wire Cut



Coarse Cut

EFFECTS



Iron Spot



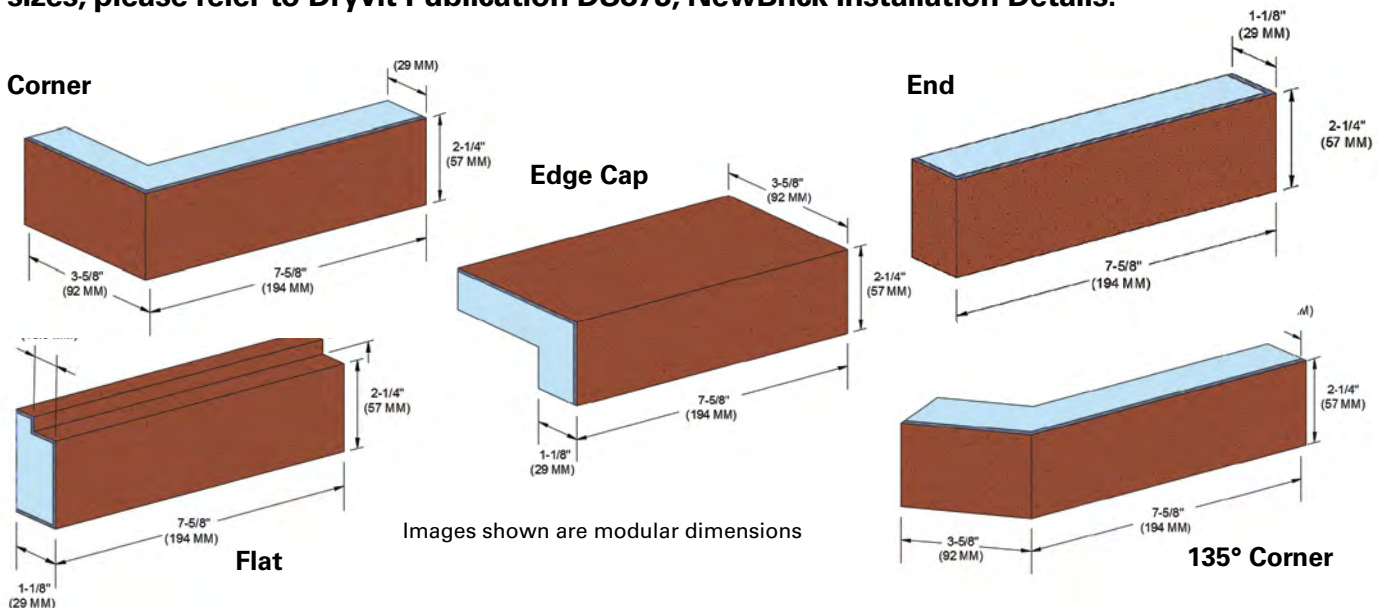
Flashed

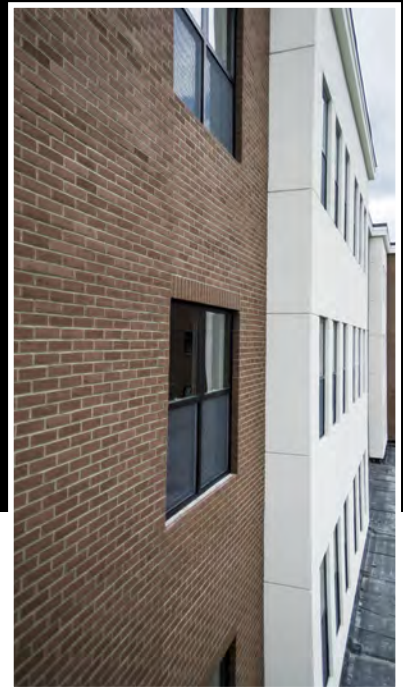


Flashed with Iron Spot

BRICK SIZES

NewBrick is available in four popular sizes — Modular, Utility, Economy and Norman. Shown below are the types and dimensions for Modular. For dimensions on other NewBrick sizes, please refer to Dryvit Publication DS873, NewBrick Installation Details.





NEWBRICK™ IS A LIGHTWEIGHT INSULATED BRICK PRODUCT. It retains clay brick's classic size and appearance, with so much more.

LIGHTWEIGHT!

- Only 2.45 lbs./sq. ft. before mortar, resulting in higher daily productivity
- Eliminates ties, pans, shelf angles and significantly reduces load bearing footings
- Safer to work with – especially on multi-story construction projects
- Easy to cut and very little dust
- Compresses the exterior construction schedules
- More bricks per truck lowers transportation costs

ENERGY EFFICIENT!

- Thermal insulation built right into NewBrick, helps to reduce energy bills!
- When used in combination with Outsulation CI system, it can contribute to LEED credits

TESTED!

- Meets NFPA 285
- Contributes to the insulation requirements as published in the IECC and ASHRAE 90.1 when installed over any Outsulation CI system

- Meets the State of California energy efficiency requirements as defined in Title 24, part 6 when installed over any Outsulation CI system

SIMPLE!

- Quick and easy installation
- When installed over Outsulation CI system, the system includes air, water and vapor barrier, continuous insulation (CI), resistive drainage plane, and a cladding system that comes with a complete single source system warranty
- Single manufacturer and installed by a single contractor simplifies jobsite responsibilities and reduces coordination between trades
- Can be installed directly to nearly any solid substrate or any Dryvit Outsulation CI system
- Easy to repair if damaged
- Simple, yet versatile, allowing for decorative patterns and bonds
- NewBrick's horizontal alignment guide makes installation process easier and faster

WEIGHT AND SIMPLICITY MATTER

For the project: lower weight and increased simplicity equals lower total cost. NewBrick eliminates the need for pans, ties, shelf angles, thermal bridging solutions, and significantly reduces the size of load bearing footings increasing simplicity and reducing project costs. When combined with an integrated Air Weather Barrier (AWB), code approved flashings, continuous insulation and dual drainage planes, NewBrick meets or exceeds the latest building code in every climate zone, all fully tested.

For the installer: lower weight and simplicity equals increased ease of use, which increases productivity. When combined with Outsulation, the wall assembly from sheathing to NewBrick veneer is installed by a single source, which reduces trade coordination, all fully protected by a wall warranty from sheathing to NewBrick.



For more information on how NewBrick by Dryvit can revolutionize your next project call us at 1-800-556-7752, ext. 6 or email us at newbrick@dryvit.com.



© Dryvit Systems, Inc. 2017
Printed in U.S.A. R3: 4/17 15M | DS277

Information contained in this brochure conforms to the standard detail recommendations and specifications for the installation of Dryvit Systems, Inc. products as of the date of publication of this document and is presented in good faith. Dryvit Systems, Inc. assumes no liability, expressed or implied, as to the architecture, engineering or workmanship of any product. To ensure that you are using the latest, most complete information, contact Dryvit Systems, Inc.



Dryvit Systems, Inc.
401-822-4100 ext. 6
dryvit.com/newbrick