

# **CEMENT BOARD MD FINISH SYSTEM™**



**An Exterior Finish System Applied Over Exterior Cement Board  
With A Water-Resistive Barrier And Moisture Drainage**

**DS190**

## **Cement Board MD Finish System Installation Details**

# Table of Contents

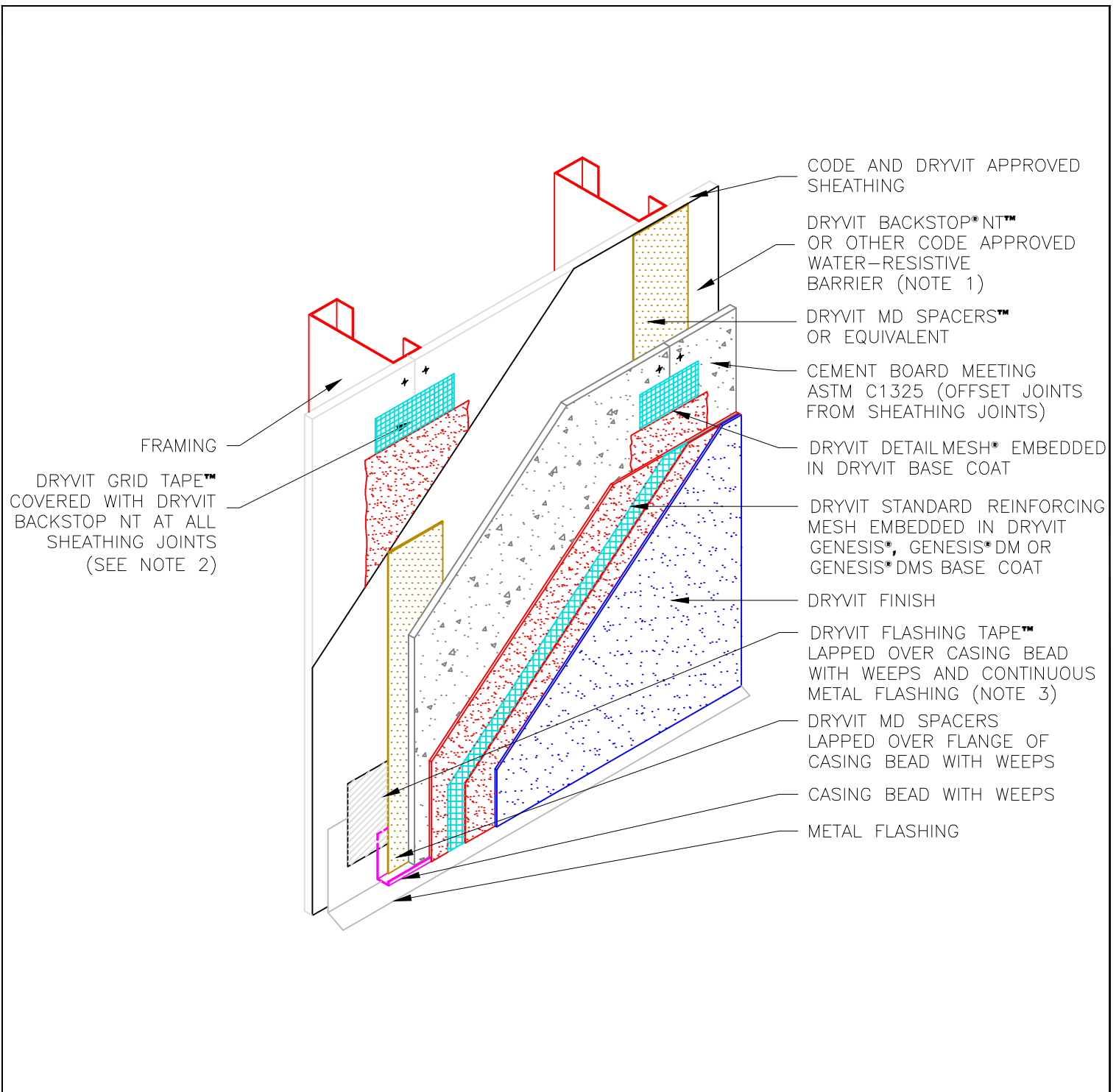
DETAIL	PAGE	NOTE
System Layout	CBMD 0.0.01	DRYVIT MAKES NO REPRESENTATION REGARDING CONFORMITY OF ITS SUGGESTIONS TO MODEL BUILDING CODES, ENGINEERING CRITERIA, SPECIFIC APPLICATIONS OR PROJECT LOCATIONS. ALL COMPONENTS INDICATED IN ILLUSTRATIONS, AS WELL AS OTHERS THAT MAY BE REQUIRED FOR THE INTEGRITY OF THE SYSTEM SHALL BE DESIGNED, DETAILED AND ENGINEERED BY REPRESENTATIVES OF THE ARCHITECT, OWNER OR CONTRACTOR TO BE IN CONFORMANCE WITH MODEL CODES, ARCHITECTURAL AND ENGINEERING REQUIREMENTS PERTAINING TO SPECIFIC BUILDING PROJECTS.  DRYVIT MAKES NO WARRANTY, EXPRESSED OR IMPLIED, AS TO THE ARCHITECTURAL DESIGN, ENGINEERING, OR WORKMANSHIP OF PROJECTS UTILIZING DRYVIT SYSTEMS OR PRODUCTS.  THE LIABILITIES OF DRYVIT SHALL BE AS STATED IN THE DRYVIT STANDARD WARRANTY. CONTACT DRYVIT FOR A FULL AND COMPLETE COPY OF THIS WARRANTY.
Termination at Foundation	CBMD 0.0.02	
Expansion Joint at Floor Line	CBMD 0.0.03	
Opening Preparation for Storefront Window	CBMD 0.0.04	
Storefront Window Sill/Jamb	CBMD 0.0.05	
Storefront Window Head	CBMD 0.0.06	
Flanged Window Sill/Jamb	CBMD 0.0.07	
Flanged Window Head	CBMD 0.0.08	
Railing Attachment	CBMD 0.0.09	
Vent Penetration	CBMD 0.0.10	
Termination at Sloped Roof	CBMD 0.0.11	
Parapet/Wall Intersection	CBMD 0.0.12	
Parapet Termination	CBMD 0.0.13	
Termination at Deck	CBMD 0.0.14	
Soffit/Fascia Termination	CBMD 0.0.15	
Vertical Control/Expansion Joint	CBMD 0.0.16	
Outside Corner	CBMD 0.0.17	
EPS Shape Attachment	CBMD 0.0.18	

## Cement Board MD Finish System™

## Table Of Contents

The architecture, engineering, and design of the project using the Dryvit products is the responsibility of the project's design professional. All systems must comply with local building codes and standards. This detail is for general information and guidance only and Dryvit specifically disclaims any liability for the use of this detail and for the architecture, design, engineering or workmanship of any project. The project design professional determines, in its sole discretion, whether this detail or a functionally equivalent detail is best suited for the project. Use of a functionally equivalent detail does not violate Dryvit's warranty. This detail is subject to change without notice. Contact Dryvit to ensure you have the most recent version.





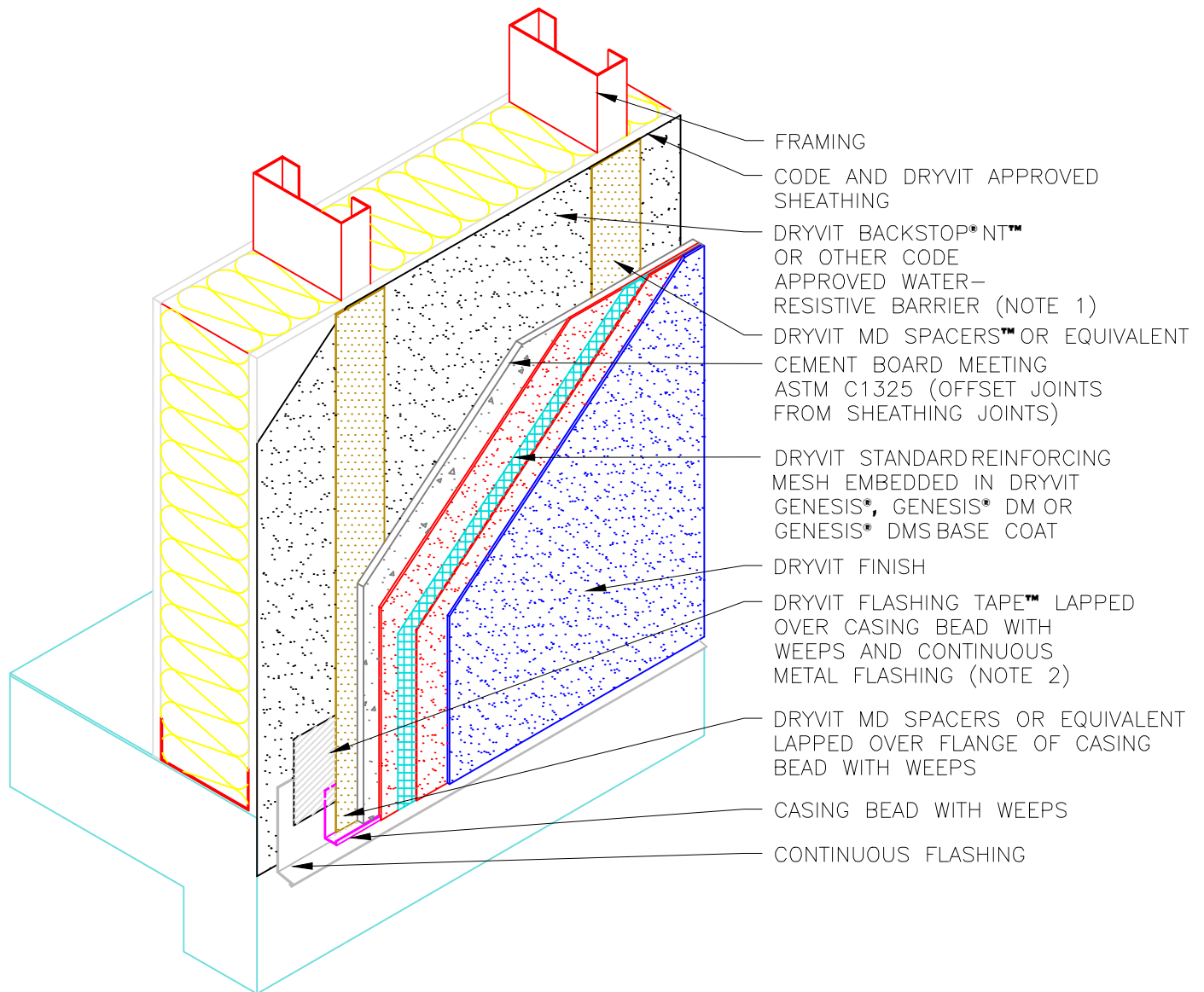
## Cement Board MD Finish System™

## System Layout

### NOTE:

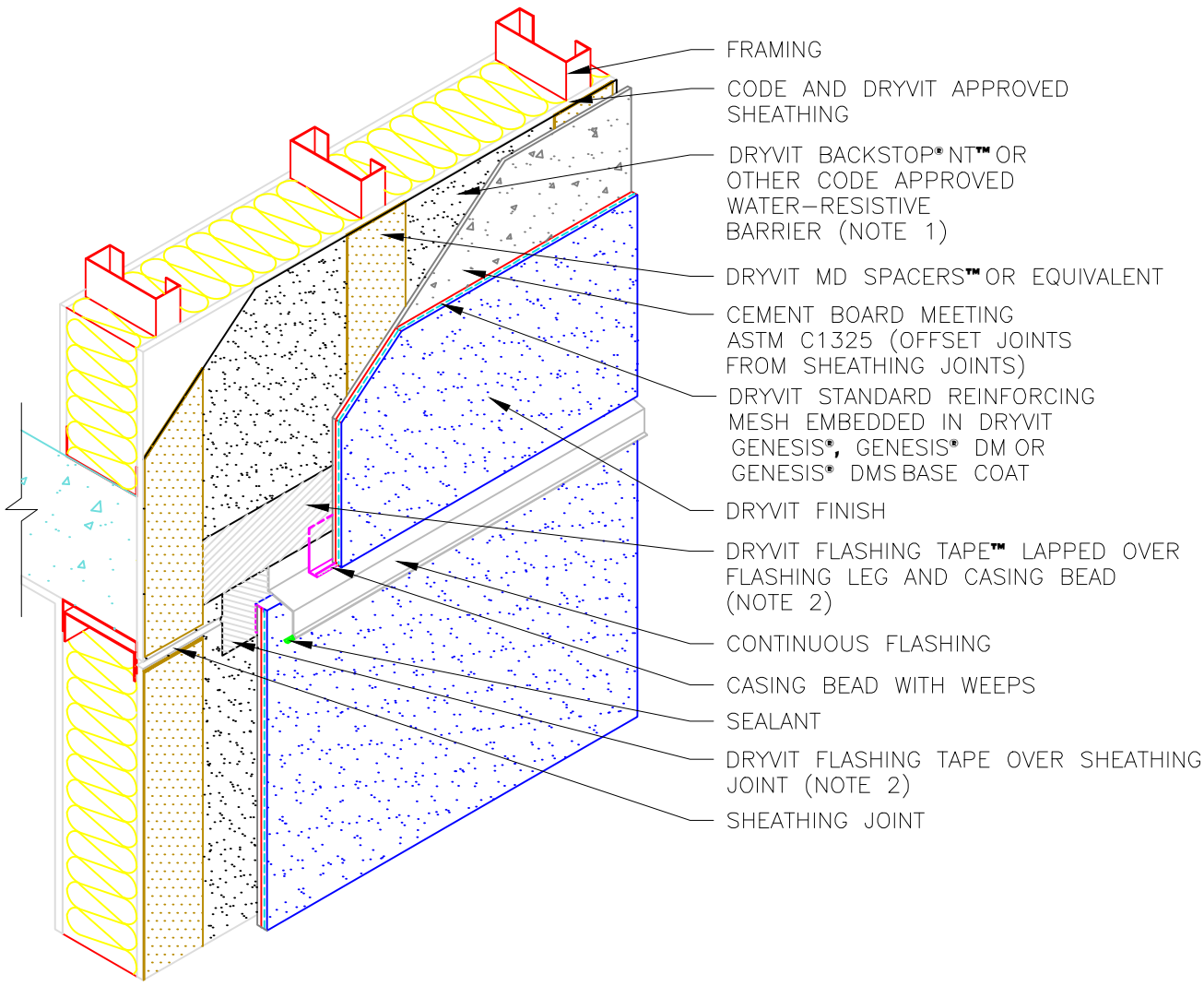
- 1: SHEET TYPE WATER-RESISTIVE MEMBRANES SHALL BE INSTALLED IN A WEATHER BOARD FASHION
- 2: DRYVIT GRID TAPE NOT REQUIRED WHEN SHEET TYPE WATER-RESISTIVE BARRIERS ARE SPECIFIED
- 3: DRYVIT AQUAFLASH® SYSTEM MAY BE USED IN LIEU OF DRYVIT FLASHING TAPE WHEN DRYVIT BACKSTOP NT IS USED AS THE WATER-RESISTIVE BARRIER

The architecture, engineering, and design of the project using the Dryvit products is the responsibility of the project's design professional. All systems must comply with local building codes and standards. This detail is for general information and guidance only and Dryvit specifically disclaims any liability for the use of this detail and for the architecture, design, engineering or workmanship of any project. The project design professional determines, in its sole discretion, whether this detail or a functionally equivalent detail is best suited for the project. Use of a functionally equivalent detail does not violate Dryvit's warranty. This detail is subject to change without notice. Contact Dryvit to ensure you have the most recent version.

**Cement Board MD Finish System™****Termination at Foundation****NOTE:**

- 1: SHEET TYPE WATER-RESISTIVE MEMBRANES SHALL BE INSTALLED IN A WEATHER BOARD FASHION
- 2: DRYVIT AQUAFLASH® SYSTEM MAY BE USED IN LIEU OF DRYVIT FLASHING TAPE WHEN DRYVIT BACKSTOP NT IS USED AS THE WATER-RESISTIVE BARRIER

The architecture, engineering, and design of the project using the Dryvit products is the responsibility of the project's design professional. All systems must comply with local building codes and standards. This detail is for general information and guidance only and Dryvit specifically disclaims any liability for the use of this detail and for the architecture, design, engineering or workmanship of any project. The project design professional determines, in its sole discretion, whether this detail or a functionally equivalent detail is best suited for the project. Use of a functionally equivalent detail does not violate Dryvit's warranty. This detail is subject to change without notice. Contact Dryvit to ensure you have the most recent version.



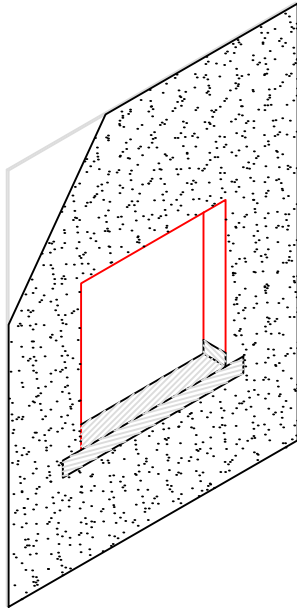
**Cement Board MD Finish System™ Expansion Joint at Floor Line**

**NOTE:**

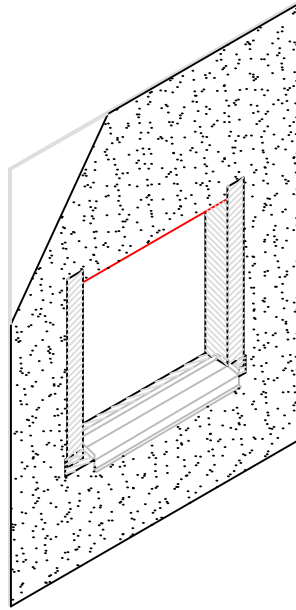
- 1: SHEET TYPE WATER-RESISTIVE MEMBRANES SHALL BE INSTALLED IN A WEATHER BOARD FASHION
- 2: DRYVIT AQUAFLASH® SYSTEM MAY BE USED IN LIEU OF DRYVIT FLASHING TAPE WHEN DRYVIT BACKSTOP NT IS USED AS THE WATER-RESISTIVE BARRIER

The architecture, engineering, and design of the project using the Dryvit products is the responsibility of the project's design professional. All systems must comply with local building codes and standards. This detail is for general information and guidance only and Dryvit specifically disclaims any liability for the use of this detail and for the architecture, design, engineering or workmanship of any project. The project design professional determines, in its sole discretion, whether this detail or a functionally equivalent detail is best suited for the project. Use of a functionally equivalent detail does not violate Dryvit's warranty. This detail is subject to change without notice. Contact Dryvit to ensure you have the most recent version.

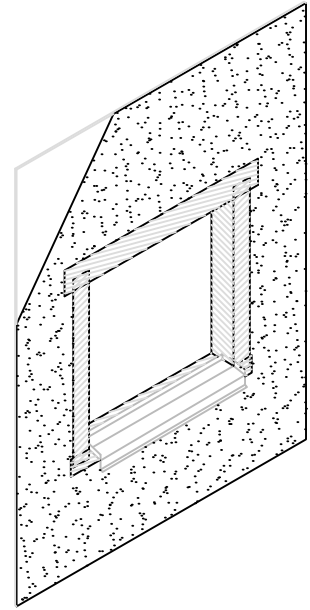




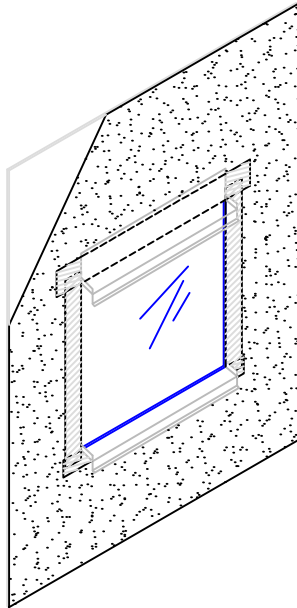
**STEP 1:** APPLY DRYVIT BACKSTOP\*NT™ TO THE FACE OF THE WALL AND INSTALL DRYVIT FLASHING TAPE AT SILL AND LAP ONTO JAMB



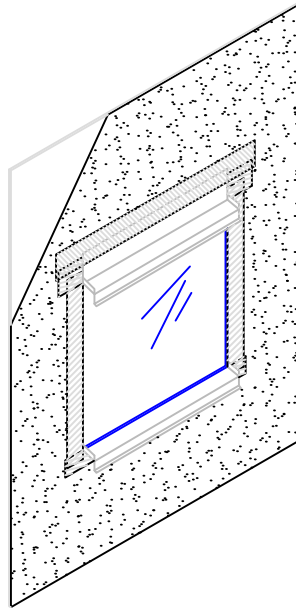
**STEP 2:** INSTALL SILL PAN FLASHING AND APPLY DRYVIT FLASHING TAPE™ AT JAMBS AND LAP ONTO UPTURNED EDGE OF PAN FLASHING



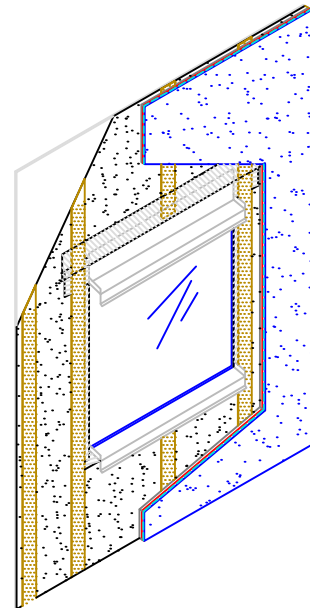
**STEP 3:** INSTALL HEAD FLASHING TAPE LAPPING OVER JAMB FLASHING



**STEP 4:** INSTALL WINDOW UNIT AND HEAD FLASHING



**STEP 5:** APPLY FLASHING TAPE OVER METAL FLASHING AT WINDOW HEAD



**STEP 6:** INSTALL MD SPACERS OR EQUIVALENT, CEMENT BOARD AND COATINGS

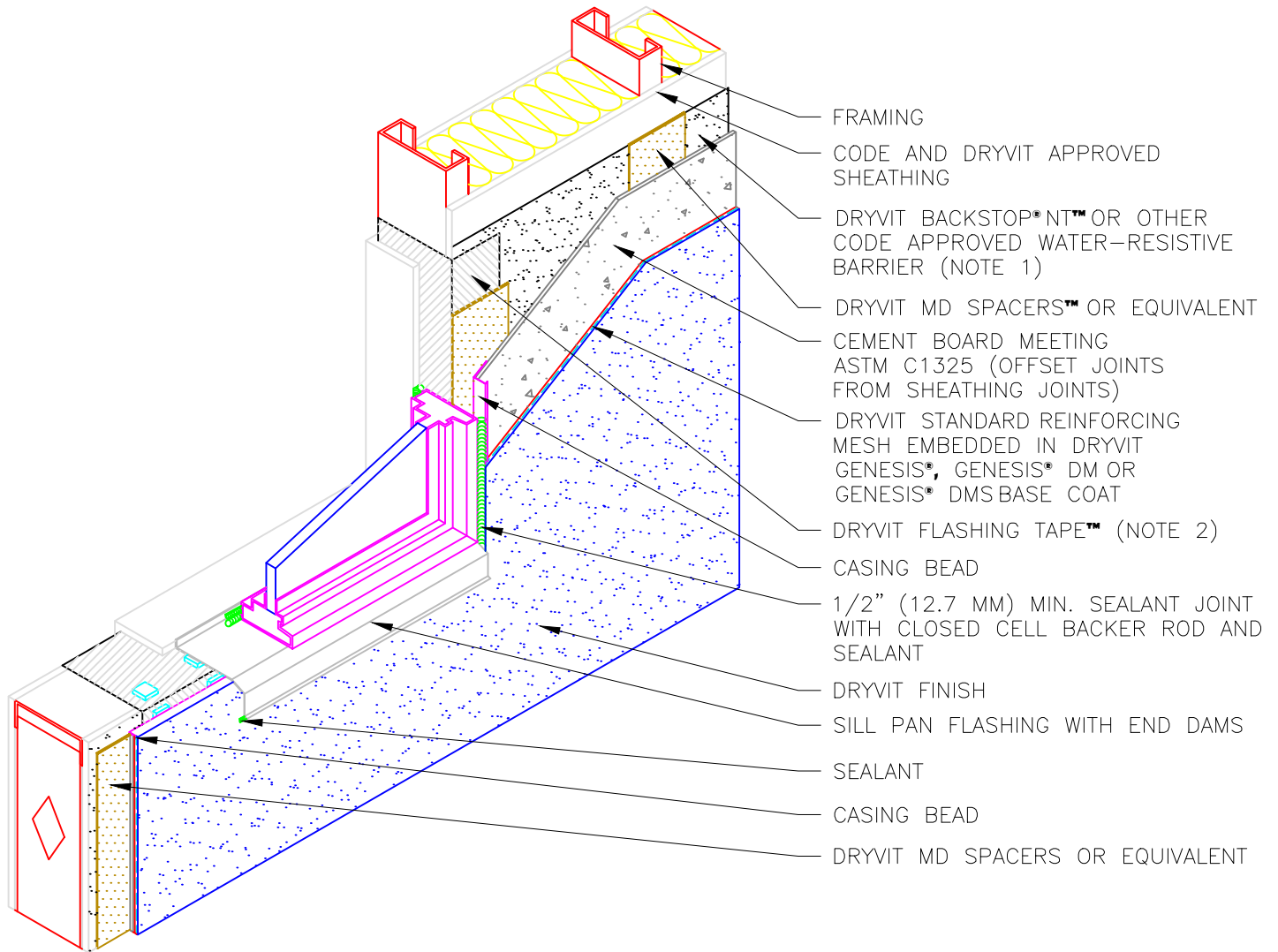
## Cement Board MD Finish System™

## Opening Preparation for Storefront Window

### NOTE:

- 1: FLASHING TAPE SHALL EXTEND TO INSIDE FACE OF FRAMING
- 2: SHEET TYPE WATER RESISTIVE MEMBRANES SHALL BE INSTALLED IN A WEATHER BOARD FASHION
- 3: DRYVIT AQUAFLASH® SYSTEM MAY BE USED IN LIEU OF DRYVIT FLASHING TAPE WHEN DRYVIT BACKSTOP NT IS USED AS THE WATER-RESISTIVE BARRIER

The architecture, engineering, and design of the project using the Dryvit products is the responsibility of the project's design professional. All systems must comply with local building codes and standards. This detail is for general information and guidance only and Dryvit specifically disclaims any liability for the use of this detail and for the architecture, design, engineering or workmanship of any project. The project design professional determines, in its sole discretion, whether this detail or a functionally equivalent detail is best suited for the project. Use of a functionally equivalent detail does not violate Dryvit's warranty. This detail is subject to change without notice. Contact Dryvit to ensure you have the most recent version.

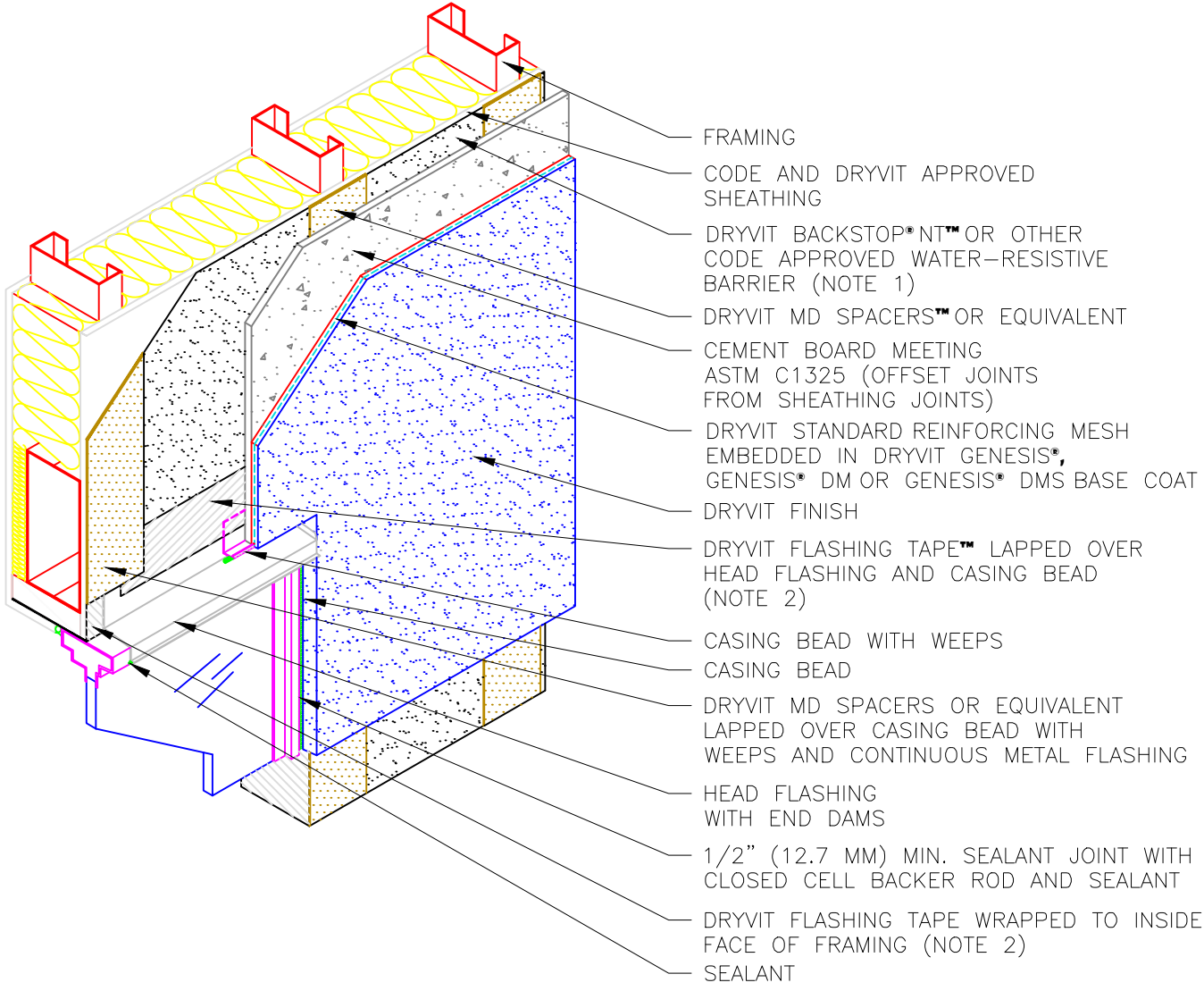


## Cement Board MD Finish System™ Storefront Window Sill/Jamb

**NOTE:**

- 1: SHEET TYPE WATER-RESISTIVE MEMBRANES SHALL BE INSTALLED IN A WEATHER BOARD FASHION
- 2: DRYVIT AQUAFLASH® SYSTEM MAY BE USED IN LIEU OF DRYVIT FLASHING TAPE WHEN DRYVIT BACKSTOP NT IS USED AS THE WATER-RESISTIVE BARRIER

The architecture, engineering, and design of the project using the Dryvit products is the responsibility of the project's design professional. All systems must comply with local building codes and standards. This detail is for general information and guidance only and Dryvit specifically disclaims any liability for the use of this detail and for the architecture, design, engineering or workmanship of any project. The project design professional determines, in its sole discretion, whether this detail or a functionally equivalent detail is best suited for the project. Use of a functionally equivalent detail does not violate Dryvit's warranty. This detail is subject to change without notice. Contact Dryvit to ensure you have the most recent version.



**Cement Board MD Finish System™**

**Storefront Window Head**

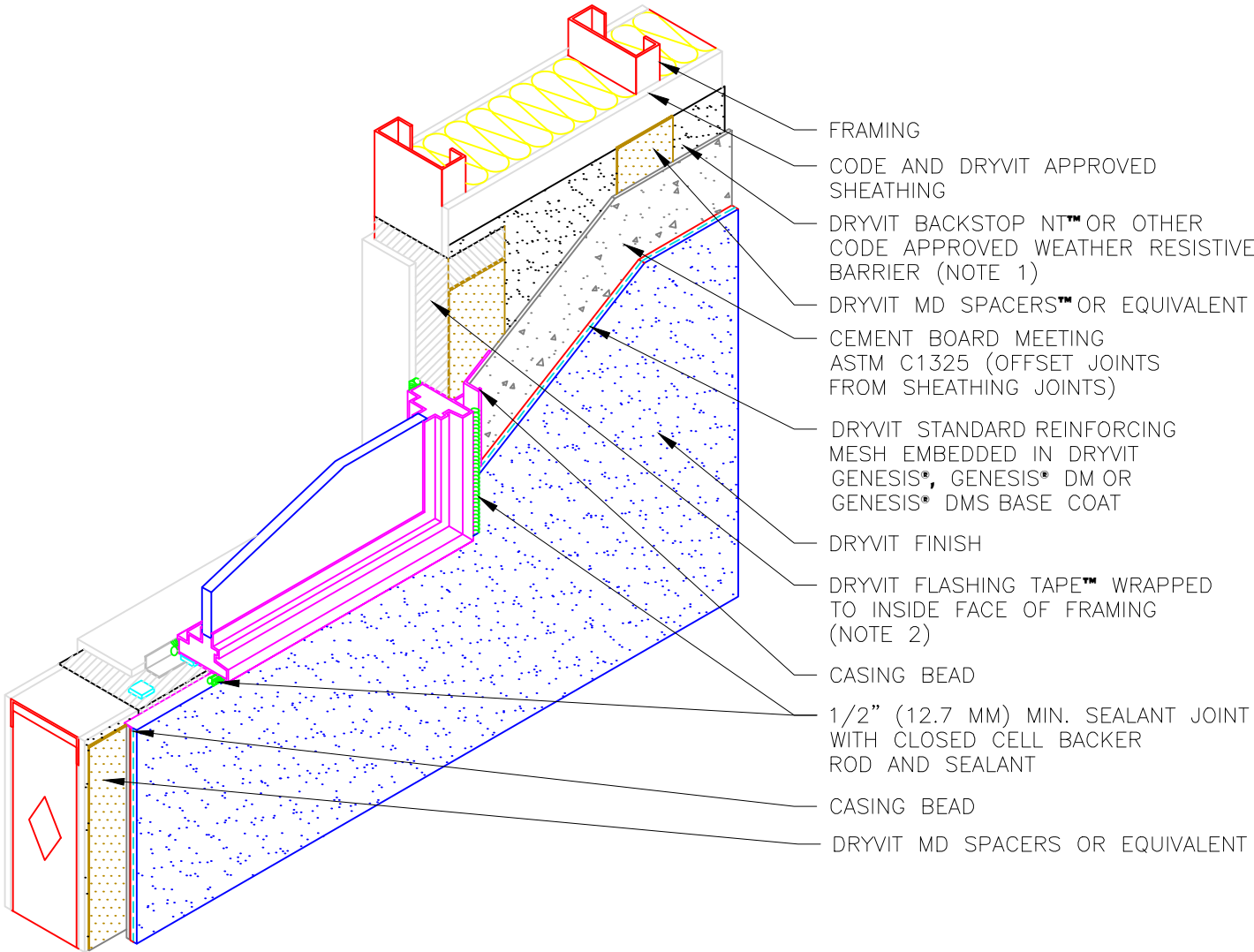
**NOTE:**

- 1: SHEET TYPE WATER-RESISTIVE MEMBRANES SHALL BE INSTALLED IN A WEATHER BOARD FASHION
- 2: DRYVIT AQUAFASH® SYSTEM MAY BE USED IN LIEU OF DRYVIT FLASHING TAPE WHEN DRYVIT BACKSTOP NT IS USED AS THE WATER-RESISTIVE BARRIER

The architecture, engineering, and design of the project using the Dryvit products is the responsibility of the project's design professional. All systems must comply with local building codes and standards. This detail is for general information and guidance only and Dryvit specifically disclaims any liability for the use of this detail and for the architecture, design, engineering or workmanship of any project. The project design professional determines, in its sole discretion, whether this detail or a functionally equivalent detail is best suited for the project. Use of a functionally equivalent detail does not violate Dryvit's warranty. This detail is subject to change without notice. Contact Dryvit to ensure you have the most recent version.







- FRAMING
- CODE AND DRYVIT APPROVED SHEATHING
- DRYVIT BACKSTOP NT™ OR OTHER CODE APPROVED WEATHER RESISTIVE BARRIER (NOTE 1)
- DRYVIT MD SPACERS™ OR EQUIVALENT
- CEMENT BOARD MEETING ASTM C1325 (OFFSET JOINTS FROM SHEATHING JOINTS)
- DRYVIT STANDARD REINFORCING MESH EMBEDDED IN DRYVIT GENESIS®, GENESIS® DM OR GENESIS® DMS BASE COAT
- DRYVIT FINISH
- DRYVIT FLASHING TAPE™ WRAPPED TO INSIDE FACE OF FRAMING (NOTE 2)
- CASING BEAD
- 1/2" (12.7 MM) MIN. SEALANT JOINT WITH CLOSED CELL BACKER ROD AND SEALANT
- CASING BEAD
- DRYVIT MD SPACERS OR EQUIVALENT

**Cement Board MD Finish System™**

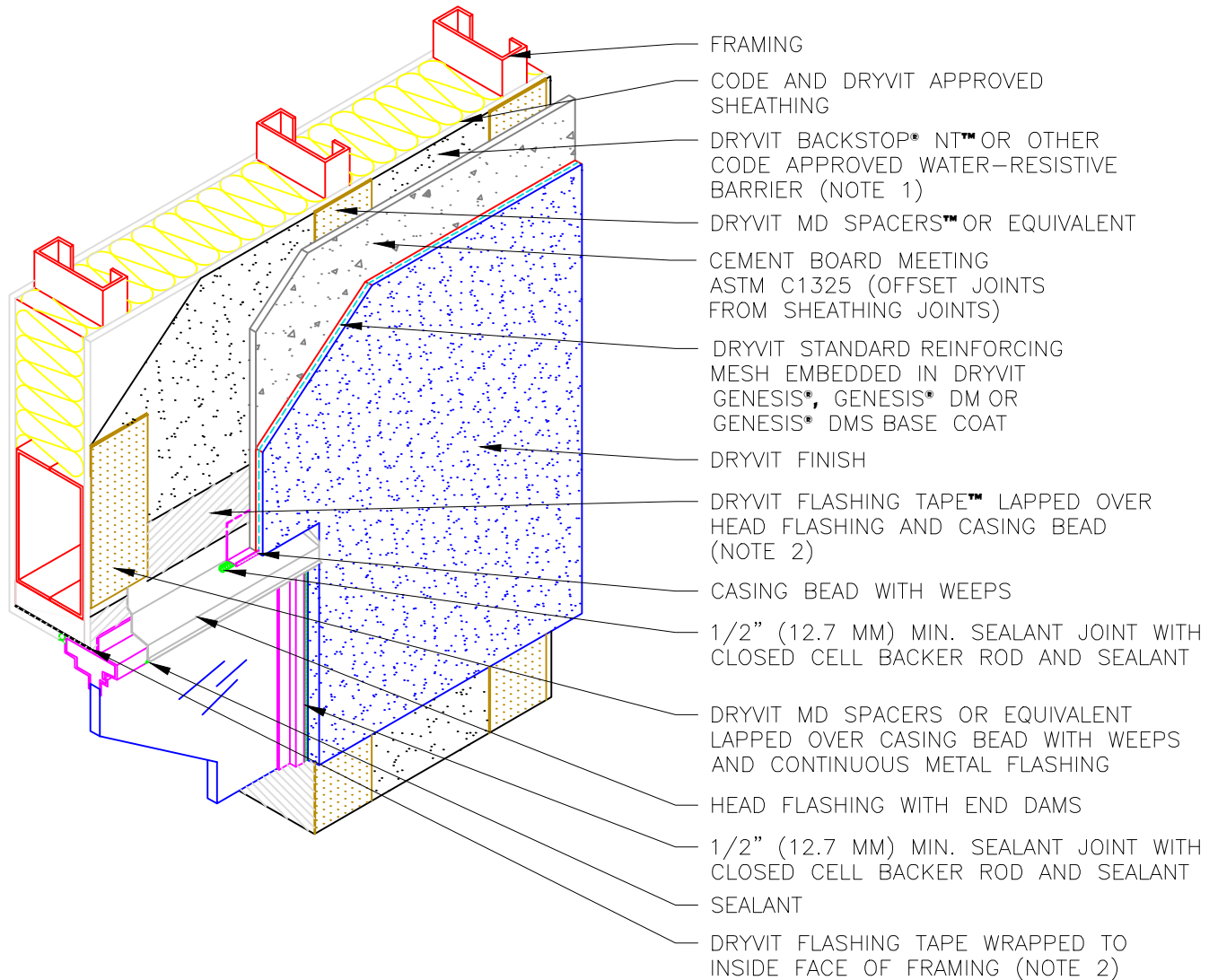
**Flanged Window Sill/Jamb**

**NOTE:**

- 1: SHEET TYPE WATER-RESISTIVE MEMBRANES SHALL BE INSTALLED IN A WEATHER BOARD FASHION
- 2: DRYVIT AQUAFASH® SYSTEM MAY BE USED IN LIEU OF DRYVIT FLASHING TAPE WHEN DRYVIT BACKSTOP NT IS USED AS THE WATER-RESISTIVE BARRIER

The architecture, engineering, and design of the project using the Dryvit products is the responsibility of the project's design professional. All systems must comply with local building codes and standards. This detail is for general information and guidance only and Dryvit specifically disclaims any liability for the use of this detail and for the architecture, design, engineering or workmanship of any project. The project design professional determines, in its sole discretion, whether this detail or a functionally equivalent detail is best suited for the project. Use of a functionally equivalent detail does not violate Dryvit's warranty. This detail is subject to change without notice. Contact Dryvit to ensure you have the most recent version.





**Cement Board MD Finish System™**

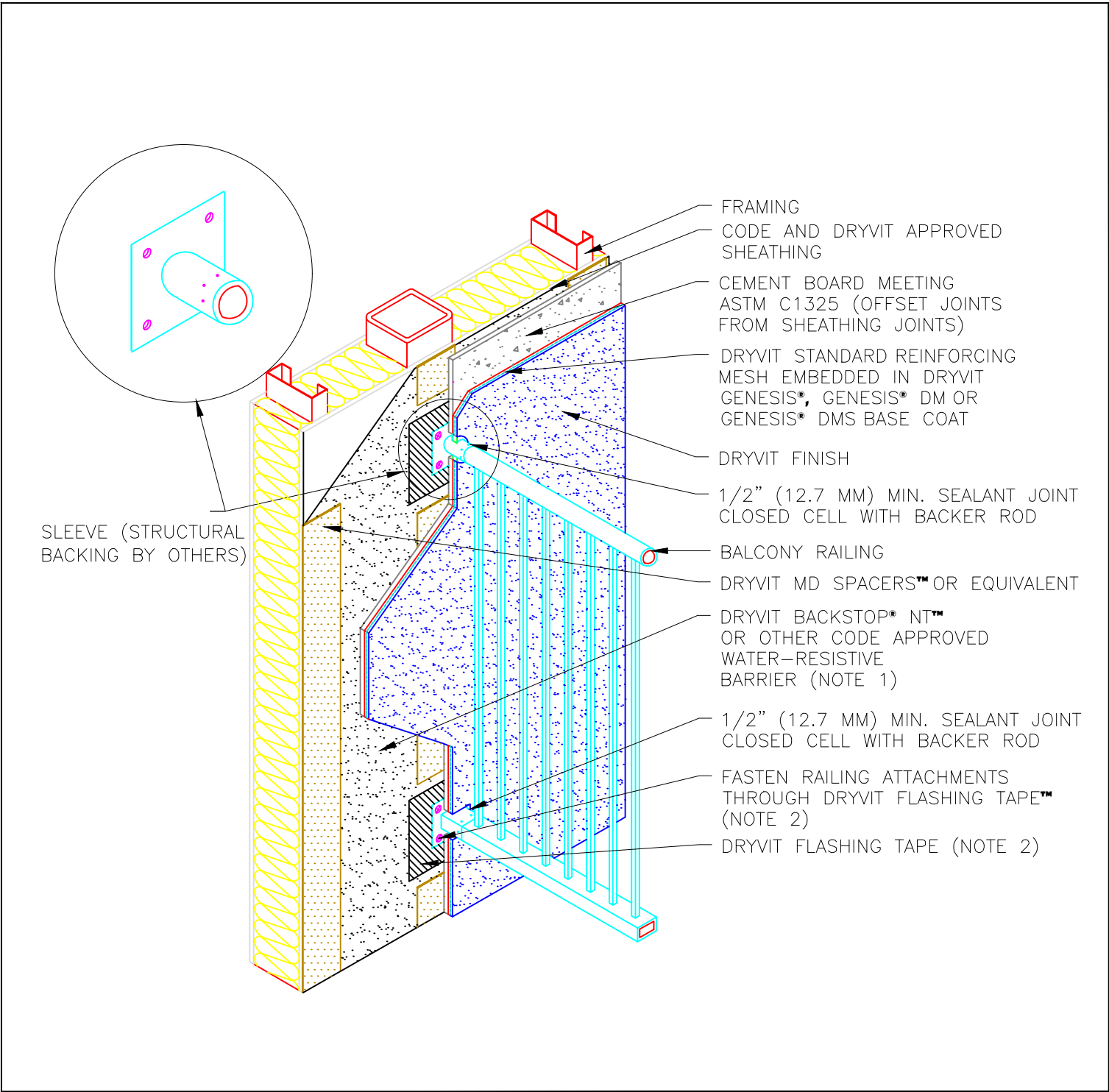
**Flanged Window Head**

**NOTE:**

- 1: SHEET TYPE WATER-RESISTIVE MEMBRANES SHALL BE INSTALLED IN A WEATHER BOARD FASHION
- 2: DRYVIT AQUAFLASH® SYSTEM MAY BE USED IN LIEU OF DRYVIT FLASHING TAPE WHEN DRYVIT BACKSTOP NT IS USED AS THE WATER-RESISTIVE BARRIER

The architecture, engineering, and design of the project using the Dryvit products is the responsibility of the project's design professional. All systems must comply with local building codes and standards. This detail is for general information and guidance only and Dryvit specifically disclaims any liability for the use of this detail and for the architecture, design, engineering or workmanship of any project. The project design professional determines, in its sole discretion, whether this detail or a functionally equivalent detail is best suited for the project. Use of a functionally equivalent detail does not violate Dryvit's warranty. This detail is subject to change without notice. Contact Dryvit to ensure you have the most recent version.





**Cement Board MD Finish System™**

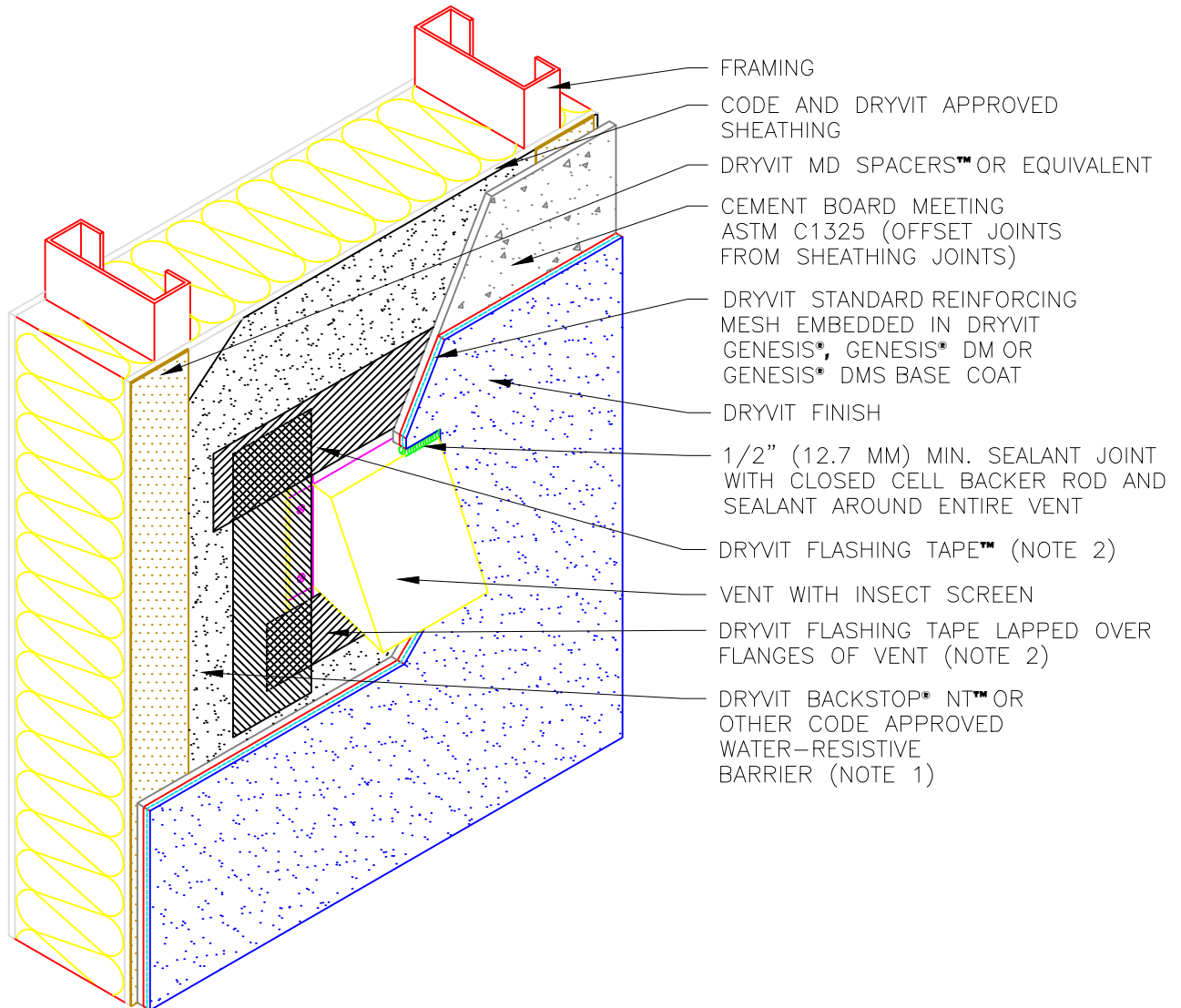
**Railing Attachment**

**NOTE:**

- 1: SHEET TYPE WATER-RESISTIVE MEMBRANES SHALL BE INSTALLED IN A WEATHER BOARD FASHION
- 2: DRYVIT AQUAFLASH® SYSTEM MAY BE USED IN LIEU OF DRYVIT FLASHING TAPE WHEN DRYVIT BACKSTOP NT IS USED AS THE WATER-RESISTIVE BARRIER

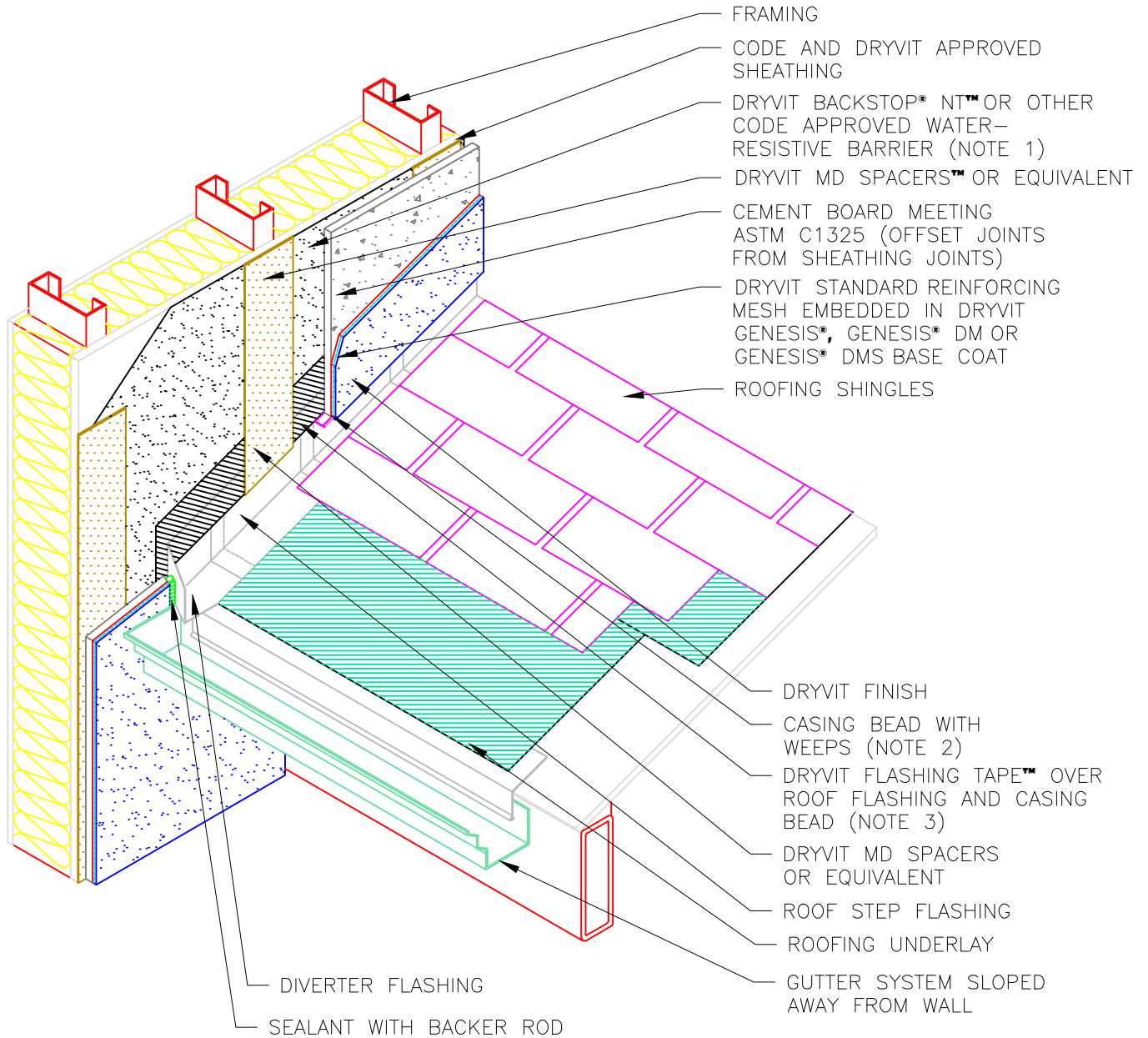
The architecture, engineering, and design of the project using the Dryvit products is the responsibility of the project's design professional. All systems must comply with local building codes and standards. This detail is for general information and guidance only and Dryvit specifically disclaims any liability for the use of this detail and for the architecture, design, engineering or workmanship of any project. The project design professional determines, in its sole discretion, whether this detail or a functionally equivalent detail is best suited for the project. Use of a functionally equivalent detail does not violate Dryvit's warranty. This detail is subject to change without notice. Contact Dryvit to ensure you have the most recent version.



**Cement Board MD Finish System™****Vent Penetration****NOTE:**

- 1: SHEET TYPE WATER-RESISTIVE MEMBRANES SHALL BE INSTALLED IN A WEATHER BOARD FASHION
- 2: DRYVIT AQUAFLASH® SYSTEM MAY BE USED IN LIEU OF DRYVIT FLASHING TAPE WHEN DRYVIT BACKSTOP NT IS USED AS THE WATER-RESISTIVE BARRIER

The architecture, engineering, and design of the project using the Dryvit products is the responsibility of the project's design professional. All systems must comply with local building codes and standards. This detail is for general information and guidance only and Dryvit specifically disclaims any liability for the use of this detail and for the architecture, design, engineering or workmanship of any project. The project design professional determines, in its sole discretion, whether this detail or a functionally equivalent detail is best suited for the project. Use of a functionally equivalent detail does not violate Dryvit's warranty. This detail is subject to change without notice. Contact Dryvit to ensure you have the most recent version.

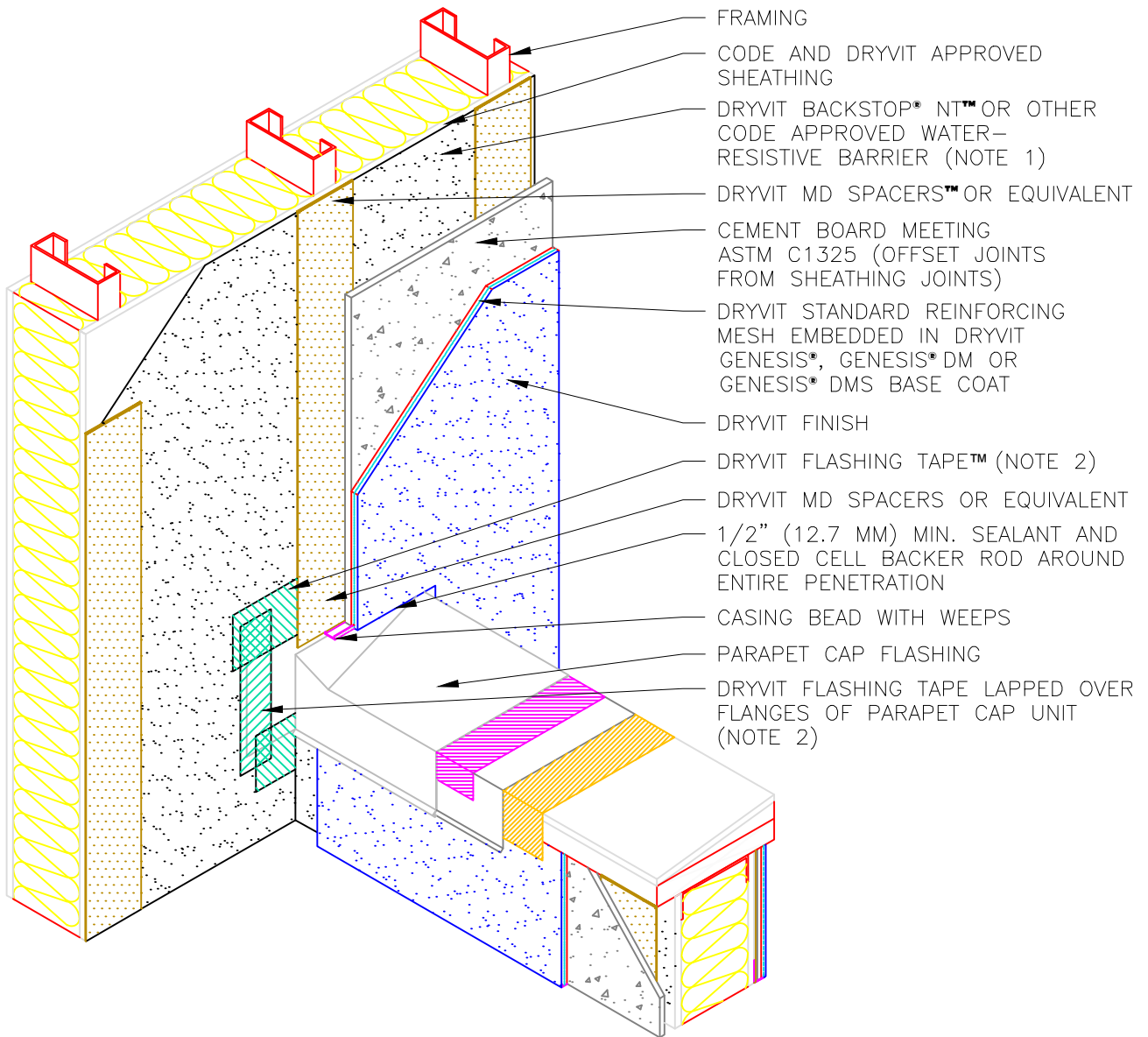


## Cement Board MD Finish System™ Termination at Sloped Roof

### NOTE:

- 1: SHEET TYPE WATER-RESISTIVE MEMBRANES SHALL BE INSTALLED IN A WEATHER BOARD FASHION
- 2: TERMINATE SYSTEM MIN. 2" (50 MM) OFF ROOF
- 3: DRYVIT AQUAFLASH® SYSTEM MAY BE USED IN LIEU OF DRYVIT FLASHING TAPE WHEN DRYVIT BACKSTOP NT IS USED AS THE WATER-RESISTIVE BARRIER

The architecture, engineering, and design of the project using the Dryvit products is the responsibility of the project's design professional. All systems must comply with local building codes and standards. This detail is for general information and guidance only and Dryvit specifically disclaims any liability for the use of this detail and for the architecture, design, engineering or workmanship of any project. The project design professional determines, in its sole discretion, whether this detail or a functionally equivalent detail is best suited for the project. Use of a functionally equivalent detail does not violate Dryvit's warranty. This detail is subject to change without notice. Contact Dryvit to ensure you have the most recent version.



- FRAMING
- CODE AND DRYVIT APPROVED SHEATHING
- DRYVIT BACKSTOP® NT™ OR OTHER CODE APPROVED WATER-RESISTIVE BARRIER (NOTE 1)
- DRYVIT MD SPACERS™ OR EQUIVALENT
- CEMENT BOARD MEETING ASTM C1325 (OFFSET JOINTS FROM SHEATHING JOINTS)
- DRYVIT STANDARD REINFORCING MESH EMBEDDED IN DRYVIT GENESIS®, GENESIS® DM OR GENESIS® DMS BASE COAT
- DRYVIT FINISH
- DRYVIT FLASHING TAPE™ (NOTE 2)
- DRYVIT MD SPACERS OR EQUIVALENT
- 1/2" (12.7 MM) MIN. SEALANT AND CLOSED CELL BACKER ROD AROUND ENTIRE PENETRATION
- CASING BEAD WITH WEEPS
- PARAPET CAP FLASHING
- DRYVIT FLASHING TAPE LAPPED OVER FLANGES OF PARAPET CAP UNIT (NOTE 2)

## Cement Board MD Finish System™

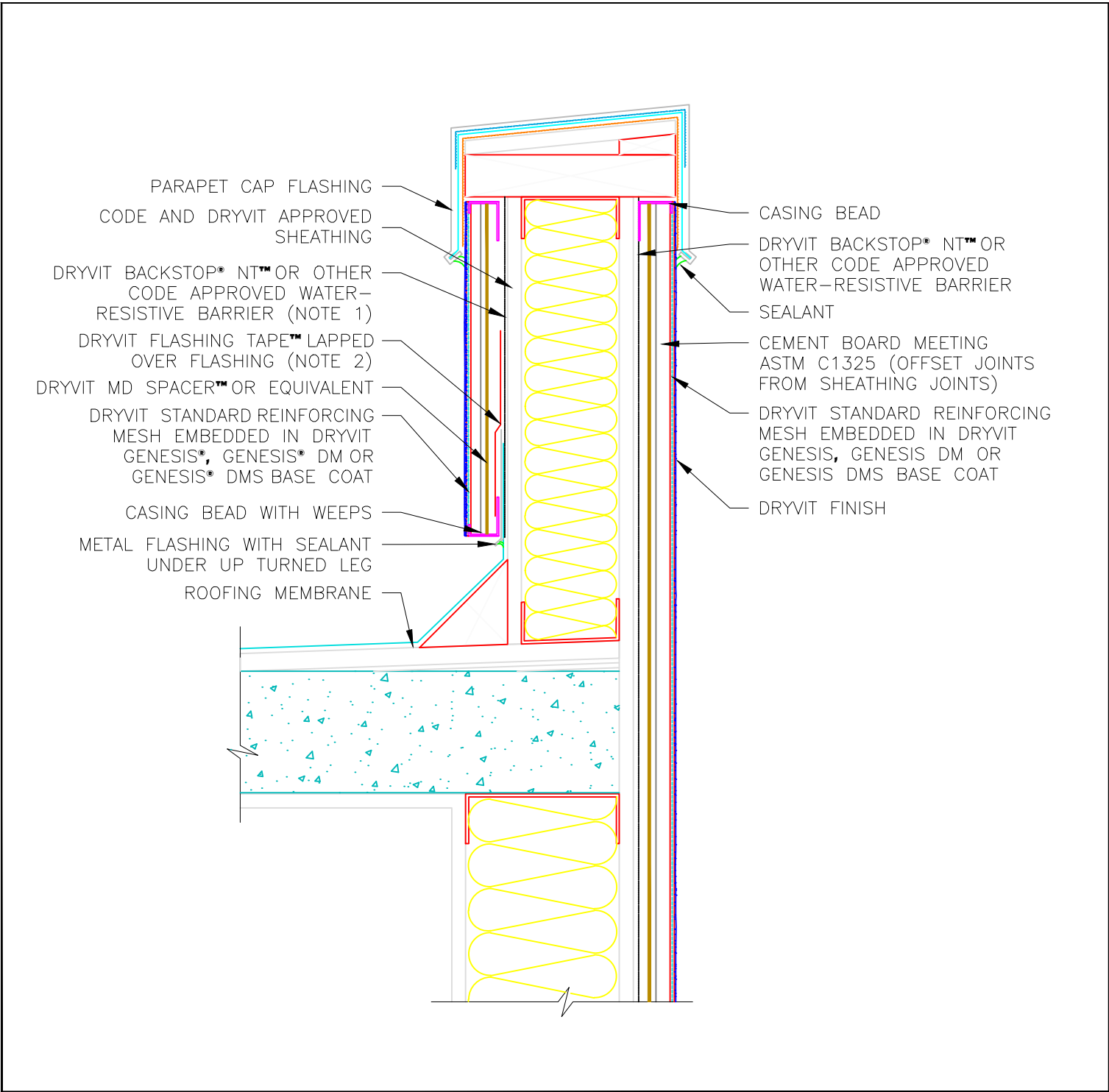
## Parapet Wall Intersection

**NOTE:**

- 1: SHEET TYPE WATER-RESISTIVE MEMBRANES SHALL BE INSTALLED IN A WEATHER BOARD FASHION
- 2: DRYVIT AQUAFLASH® SYSTEM MAY BE USED IN LIEU OF DRYVIT FLASHING TAPE WHEN DRYVIT BACKSTOP NT IS USED AS THE WATER-RESISTIVE BARRIER

The architecture, engineering, and design of the project using the Dryvit products is the responsibility of the project's design professional. All systems must comply with local building codes and standards. This detail is for general information and guidance only and Dryvit specifically disclaims any liability for the use of this detail and for the architecture, design, engineering or workmanship of any project. The project design professional determines, in its sole discretion, whether this detail or a functionally equivalent detail is best suited for the project. Use of a functionally equivalent detail does not violate Dryvit's warranty. This detail is subject to change without notice. Contact Dryvit to ensure you have the most recent version.





**Cement Board MD Finish System™**

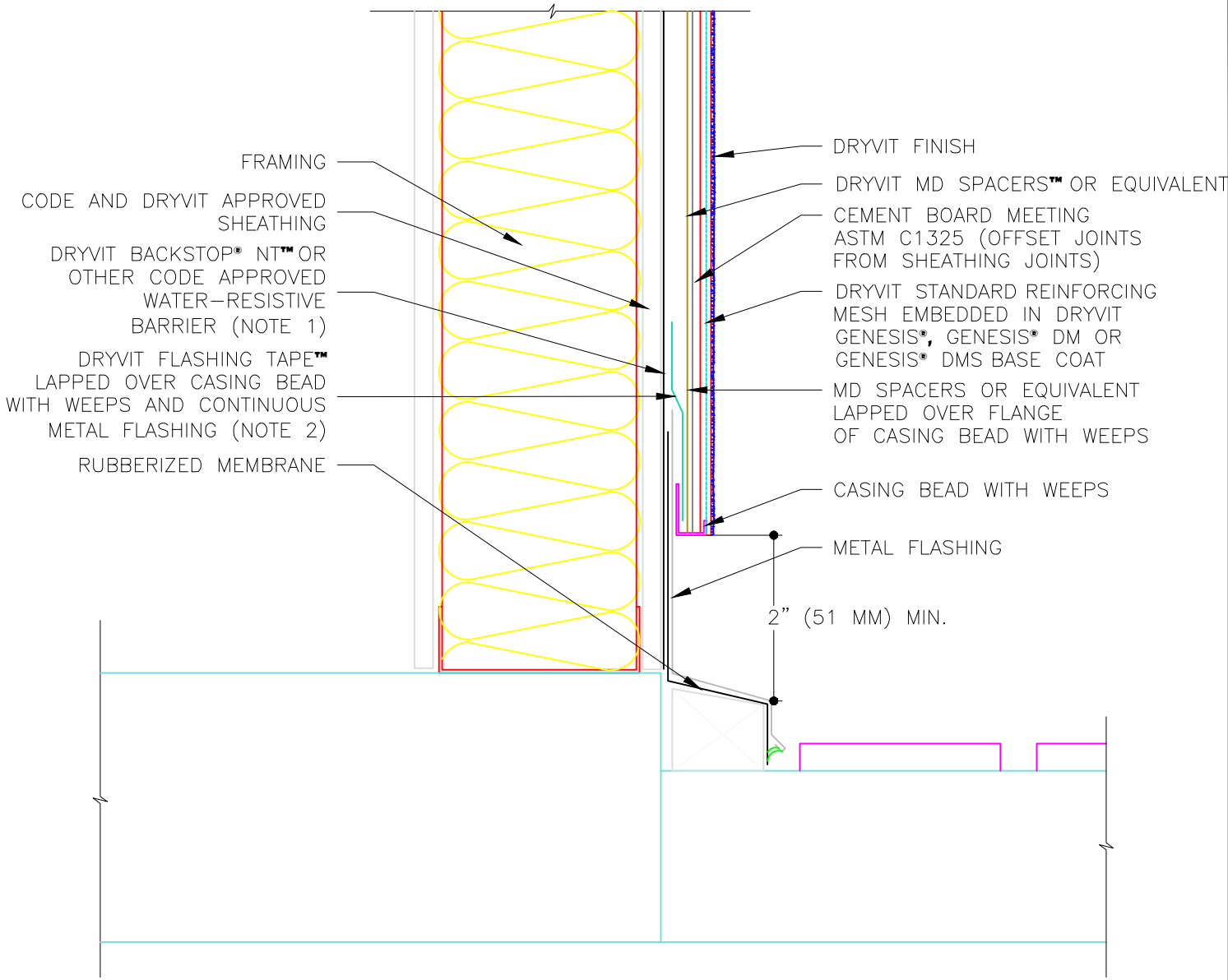
**Parapet Termination**

**NOTE:**

- 1: SHEET TYPE WATER-RESISTIVE MEMBRANES SHALL BE INSTALLED IN A WEATHER BOARD FASHION
- 2: DRYVIT AQUAFLASH® SYSTEM MAY BE USED IN LIEU OF DRYVIT FLASHING TAPE WHEN DRYVIT BACKSTOP NT IS USED AS THE WATER-RESISTIVE BARRIER

The architecture, engineering, and design of the project using the Dryvit products is the responsibility of the project's design professional. All systems must comply with local building codes and standards. This detail is for general information and guidance only and Dryvit specifically disclaims any liability for the use of this detail and for the architecture, design, engineering or workmanship of any project. The project design professional determines, in its sole discretion, whether this detail or a functionally equivalent detail is best suited for the project. Use of a functionally equivalent detail does not violate Dryvit's warranty. This detail is subject to change without notice. Contact Dryvit to ensure you have the most recent version.





**Cement Board MD Finish System™**

**Termination at Deck**

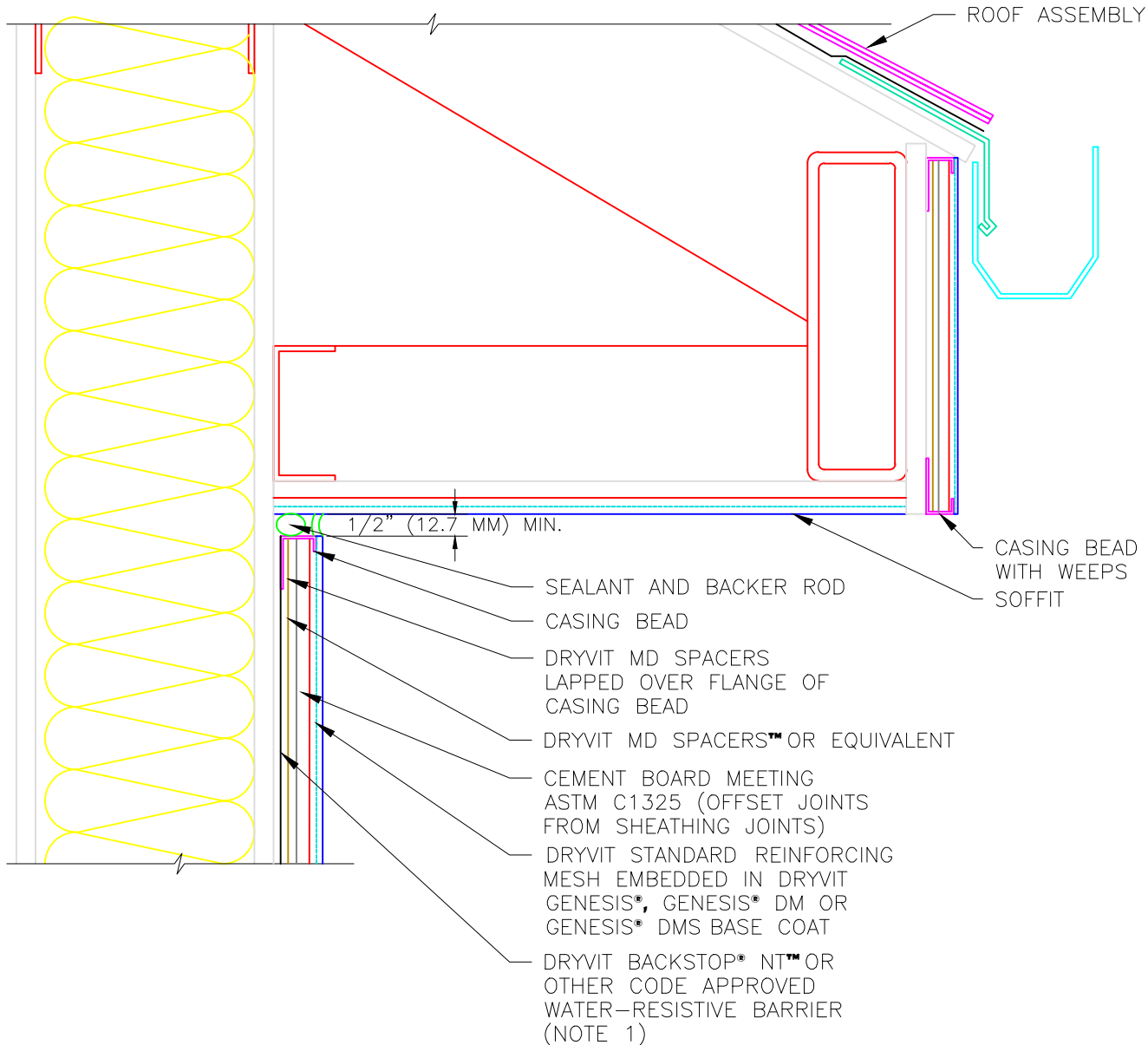
**NOTE:**

- 1: SHEET TYPE WATER-RESISTIVE MEMBRANES SHALL BE INSTALLED IN A WEATHER BOARD FASHION
- 2: DRYVIT AQUAFLASH® SYSTEM MAY BE USED IN LIEU OF DRYVIT FLASHING TAPE WHEN DRYVIT BACKSTOP NT IS USED AS THE WATER-RESISTIVE BARRIER

The architecture, engineering, and design of the project using the Dryvit products is the responsibility of the project's design professional. All systems must comply with local building codes and standards. This detail is for general information and guidance only and Dryvit specifically disclaims any liability for the use of this detail and for the architecture, design, engineering or workmanship of any project. The project design professional determines, in its sole discretion, whether this detail or a functionally equivalent detail is best suited for the project. Use of a functionally equivalent detail does not violate Dryvit's warranty. This detail is subject to change without notice. Contact Dryvit to ensure you have the most recent version.







**Cement Board MD Finish System™**

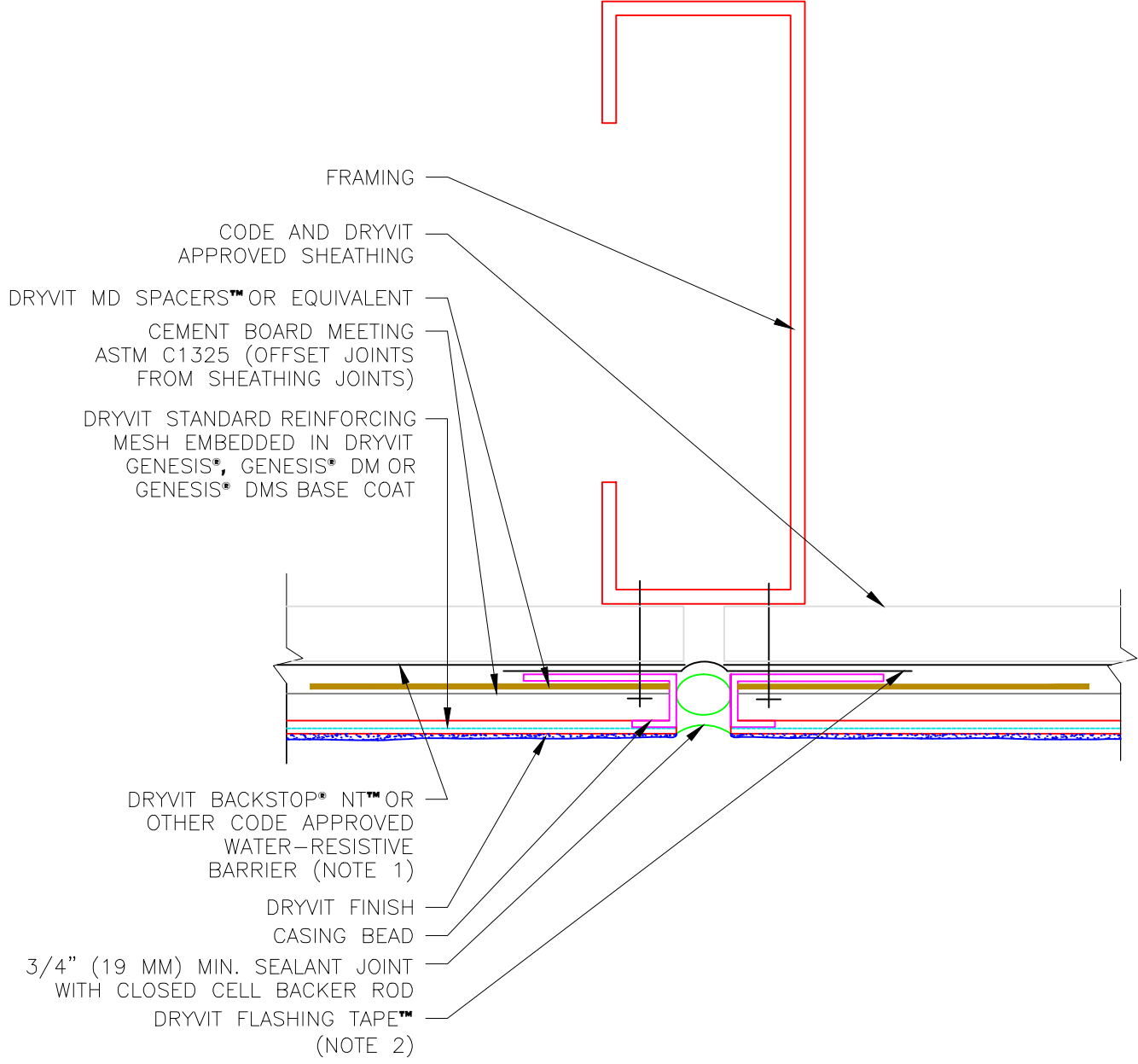
**Soffit/Fascia Termination**

**NOTE:**

- 1: SHEET TYPE WATER-RESISTIVE MEMBRANES SHALL BE INSTALLED IN A WEATHER BOARD FASHION

The architecture, engineering, and design of the project using the Dryvit products is the responsibility of the project's design professional. All systems must comply with local building codes and standards. This detail is for general information and guidance only and Dryvit specifically disclaims any liability for the use of this detail and for the architecture, design, engineering or workmanship of any project. The project design professional determines, in its sole discretion, whether this detail or a functionally equivalent detail is best suited for the project. Use of a functionally equivalent detail does not violate Dryvit's warranty. This detail is subject to change without notice. Contact Dryvit to ensure you have the most recent version.





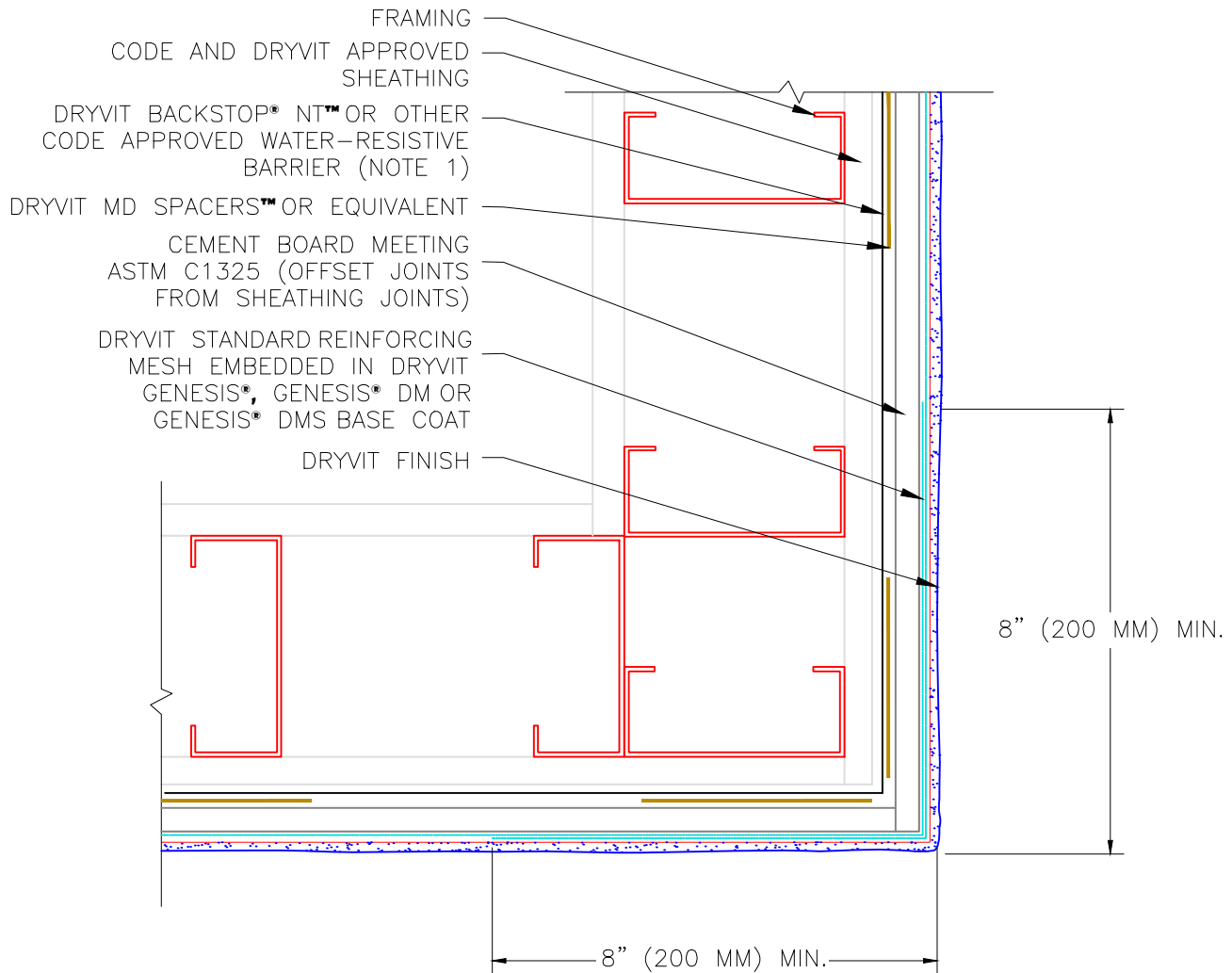
**Cement Board MD Finish System™ Vertical Control/Expansion Joint**

**NOTE:**

- 1: SHEET TYPE WATER-RESISTIVE MEMBRANES SHALL BE INSTALLED IN A WEATHER BOARD FASHION
- 2: DRYVIT AQUAFLASH® SYSTEM MAY BE USED IN LIEU OF DRYVIT FLASHING TAPE WHEN DRYVIT BACKSTOP NT IS USED AS THE WATER-RESISTIVE BARRIER

The architecture, engineering, and design of the project using the Dryvit products is the responsibility of the project's design professional. All systems must comply with local building codes and standards. This detail is for general information and guidance only and Dryvit specifically disclaims any liability for the use of this detail and for the architecture, design, engineering or workmanship of any project. The project design professional determines, in its sole discretion, whether this detail or a functionally equivalent detail is best suited for the project. Use of a functionally equivalent detail does not violate Dryvit's warranty. This detail is subject to change without notice. Contact Dryvit to ensure you have the most recent version.





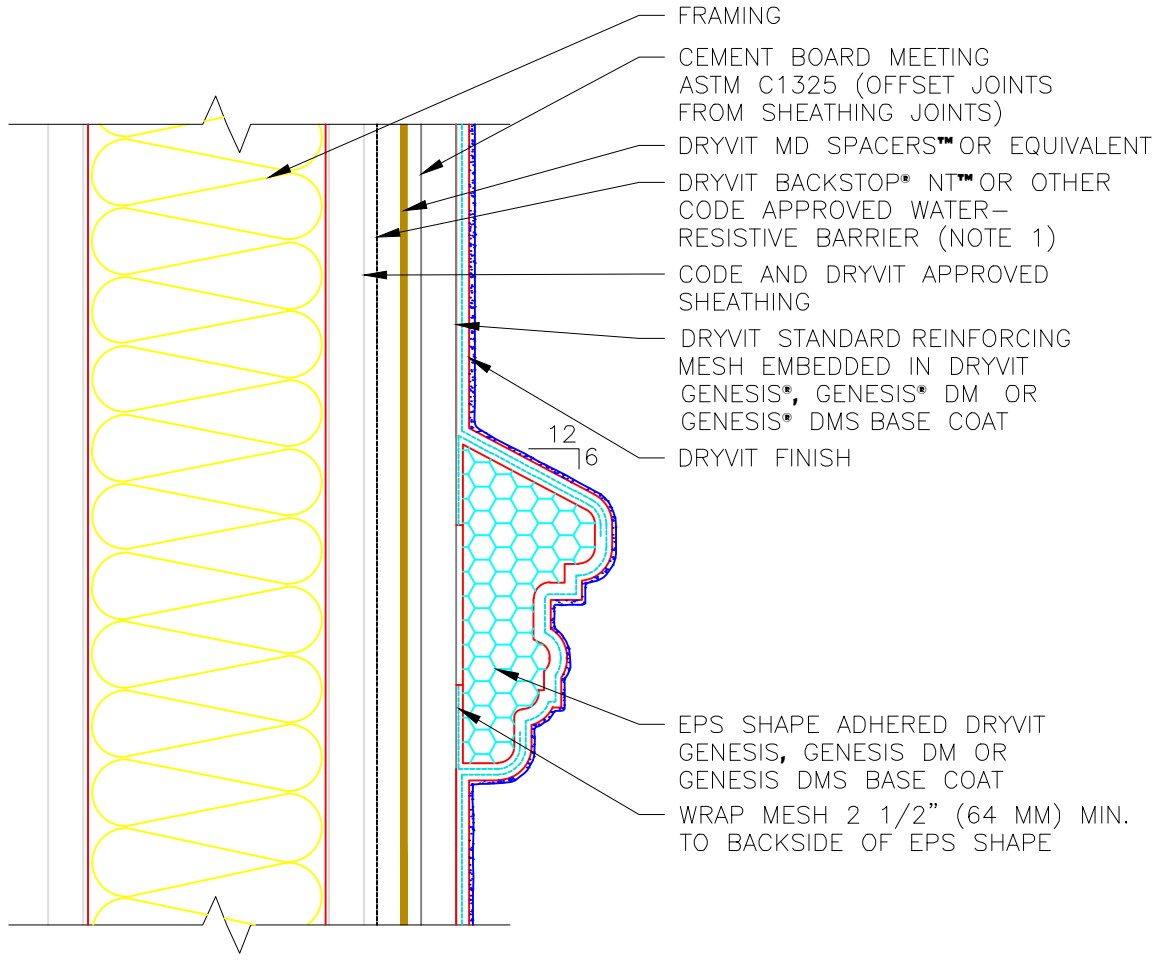
## Cement Board MD Finish System™

## Outside Corner

**NOTE:**

- 1: SHEET TYPE WATER-RESISTIVE MEMBRANES SHALL BE INSTALLED IN A WEATHER BOARD FASHION
- 2: DO NOT LAP REINFORCING MESH WITHIN 8" (200 MM) OF OUTSIDE CORNERS

The architecture, engineering, and design of the project using the Dryvit products is the responsibility of the project's design professional. All systems must comply with local building codes and standards. This detail is for general information and guidance only and Dryvit specifically disclaims any liability for the use of this detail and for the architecture, design, engineering or workmanship of any project. The project design professional determines, in its sole discretion, whether this detail or a functionally equivalent detail is best suited for the project. Use of a functionally equivalent detail does not violate Dryvit's warranty. This detail is subject to change without notice. Contact Dryvit to ensure you have the most recent version.



**Cement Board MD Finish System™**

**EPS Shape Attachment**

**NOTE:**

- 1: SHEET TYPE WATER-RESISTIVE MEMBRANES SHALL BE INSTALLED IN A WEATHER BOARD FASHION

The architecture, engineering, and design of the project using the Dryvit products is the responsibility of the project's design professional. All systems must comply with local building codes and standards. This detail is for general information and guidance only and Dryvit specifically disclaims any liability for the use of this detail and for the architecture, design, engineering or workmanship of any project. The project design professional determines, in its sole discretion, whether this detail or a functionally equivalent detail is best suited for the project. Use of a functionally equivalent detail does not violate Dryvit's warranty. This detail is subject to change without notice. Contact Dryvit to ensure you have the most recent version.

